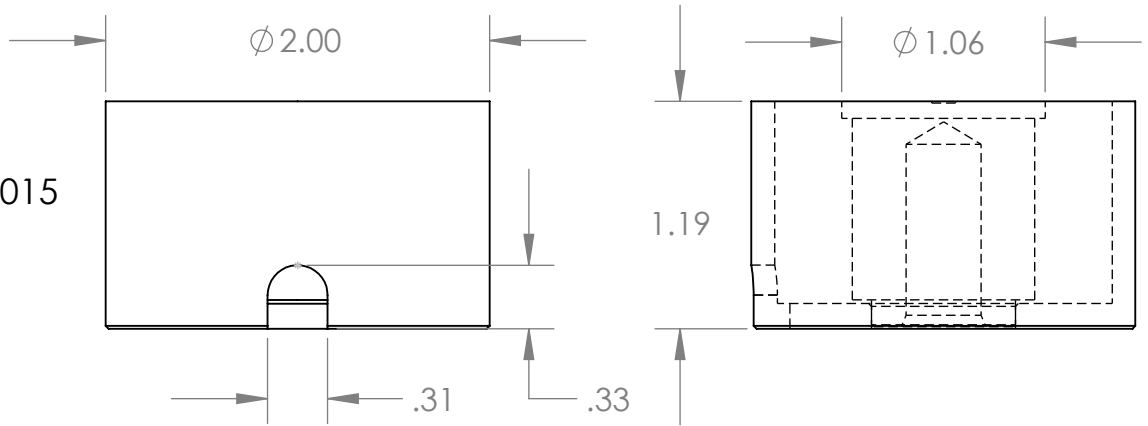


Isometric View

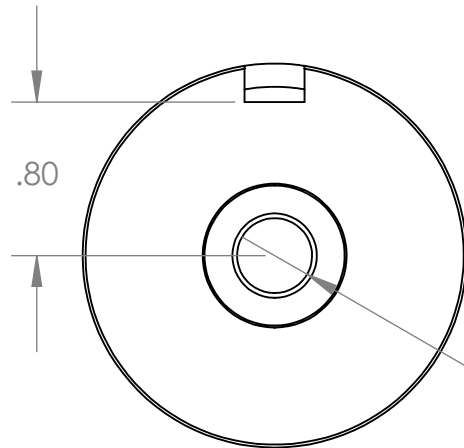


**Electrical Specifications**

- Voltage:** 12 VDC
- Duty Cycle:** Continuous
- Resistance:** 20.5 ohms ± 10% (@ 20c)
- Amps @ rated Volts:** 0.59
- Watts @ rated Volts:** 7.02
- Holding:** 140 lbs (1/4" Thick 1215 CRS @ 20c)
- Operating Temp:** -40c to 60c (range)

**Additional Components**

- Screw:** N/A
- Spring:** N/A
- Spiral Pin:** N/A
- Potting:** N/A



Ø .39 ∇ .95  
7/16-20 UNF - 2B ∇ .88

**Finish:** Housing - Zinc or Electroless Nickel Plating (0.0002-0.0003")

**PROPRIETARY AND CONFIDENTIAL**  
THE INFORMATION CONTAINED IN THIS DRAWING IS THE SOLE PROPERTY OF APW COMPANY. ANY REPRODUCTION IN PART OR AS A WHOLE WITHOUT THE WRITTEN PERMISSION OF APW COMPANY IS STRICTLY PROHIBITED.

Client	Client P/N	UNLESS OTHERWISE SPECIFIED:	NAME	DATE	<b>APW COMPANY</b>		
		DIMENSIONS ARE IN INCHES TOLERANCES: FRACTIONAL ± .010 ANGULAR: MACH ±      BEND ± TWO PLACE DECIMAL    ±.005 THREE PLACE DECIMAL   ±.003	DRAWN	D.P.		01.16.24	TITLE:
		Break Sharp edges 0.002" unless otherwise noted	CHECKED		P/N: EM200-12-222-B		
		MATERIAL	ENG APPR.				
		FINISH	MFG APPR.		SIZE	DWG. NO.	REV
NEXT ASSY	USED ON		Q.A.		<b>A</b>	<b>7037</b>	
APPLICATION		DO NOT SCALE DRAWING	COMMENTS:		SCALE: 1:1	WEIGHT:	SHEET 1 OF 1