

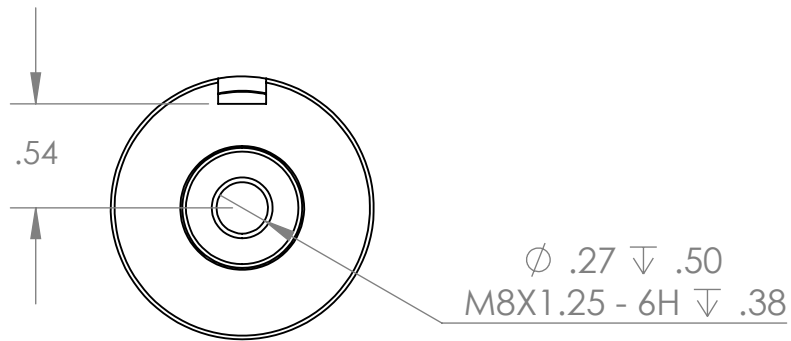
### Electrical Specifications

**Voltage:** 12 VDC  
**Duty Cycle:** Continuous  
**Resistance:** 42 ohms  $\pm 10\%$  (@ 20c)  
**Amps @ rated Volts:** 0.29  
**Watts @ rated Volts:** 3.43  
**Holding:** 44 lbs (1/4" Thick 1215 CRS @ 20c)  
**Operating Temp:** -40c to 60c (range)

### Additional Components

**Screw:** N/A  
**Spring:** N/A  
**Spiral Pin:** N/A  
**Potting:** United Resin Corp. (El-cast Black)

**Finish:** Housing - Zinc or Electroless Nickel Plating  
 (0.0002-0.0003")



**PROPRIETARY AND CONFIDENTIAL**  
 THE INFORMATION CONTAINED IN THIS DRAWING IS THE SOLE PROPERTY OF APW COMPANY. ANY REPRODUCTION IN PART OR AS A WHOLE WITHOUT THE WRITTEN PERMISSION OF APW COMPANY IS STRICTLY PROHIBITED.

Client	Client P/N	UNLESS OTHERWISE SPECIFIED:	NAME	DATE	APW COMPANY	
		DIMENSIONS ARE IN INCHES TOLERANCES: FRACTIONAL $\pm .010$ ANGULAR: MACH $\pm$ BEND $\pm$ TWO PLACE DECIMAL $\pm .005$ THREE PLACE DECIMAL $\pm .003$	DRAWN	D.P.	01.16.24	TITLE:
		Break Sharp edges 0.002" unless otherwise noted	CHECKED			P/N: EM137-12-212-B
		MATERIAL	ENG APPR.			SIZE DWG. NO. REV
NEXT ASSY	USED ON	FINISH	MFG APPR.			<b>A</b> 7027
APPLICATION		DO NOT SCALE DRAWING	Q.A.			SCALE: 1:1 WEIGHT: SHEET 1 OF 1
			COMMENTS:			