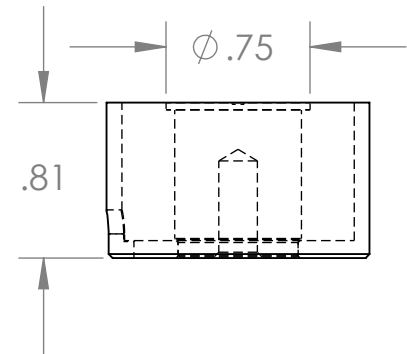
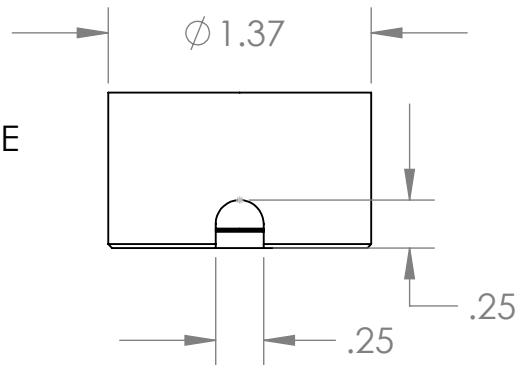


Isometric View

18" Long Leads
22 Ga. Teflon Type E

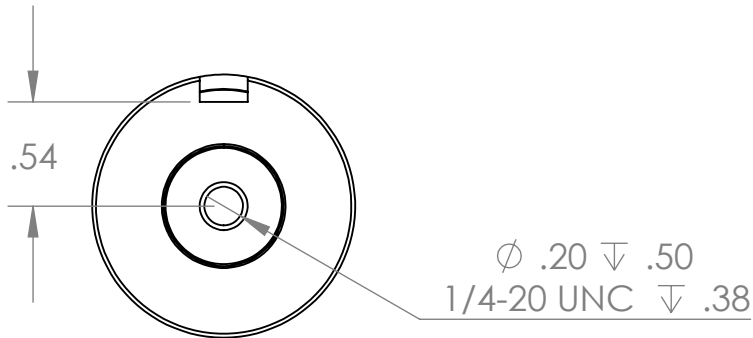


Electrical Specifications

- Voltage:** 24 VDC
- Duty Cycle:** Continuous
- Resistance:** 165 ohms ± 10% (@ 20c)
- Amps @ rated Volts:** 0.15
- Watts @ rated Volts:** 3.5
- Holding:** 44 lbs (1/4" Thick 1215 CRS @ 20c)
- Operating Temp:** -40c to 60c (range)

Additional Components

- Screw:** N/A
- Spring:** N/A
- Spiral Pin:** N/A
- Potting:** N/A



Finish: Housing - Zinc or Electroless Nickel Plating (0.0002-0.0003")

PROPRIETARY AND CONFIDENTIAL
THE INFORMATION CONTAINED IN THIS DRAWING IS THE SOLE PROPERTY OF APW COMPANY. ANY REPRODUCTION IN PART OR AS A WHOLE WITHOUT THE WRITTEN PERMISSION OF APW COMPANY IS STRICTLY PROHIBITED.

Client	Client P/N	UNLESS OTHERWISE SPECIFIED:	NAME	DATE
		DIMENSIONS ARE IN INCHES	DRAWN	D.P.
		TOLERANCES:	CHECKED	01.15.2024
		FRACTIONAL ± .010	ENG APPR.	
		ANGULAR: MACH ± BEND ±	MFG APPR.	
TWO PLACE DECIMAL ±.005	Q.A.			
THREE PLACE DECIMAL ±.003	COMMENTS:			
		Break Sharp edges 0.002" unless otherwise noted		
		MATERIAL		
		FINISH		
NEXT ASSY	USED ON			
APPLICATION		DO NOT SCALE DRAWING		

APW COMPANY		
TITLE:		
P/N: EM137-24-222-A		
SIZE	DWG. NO.	REV
A	7026	
SCALE: 1:1	WEIGHT:	SHEET 1 OF 1