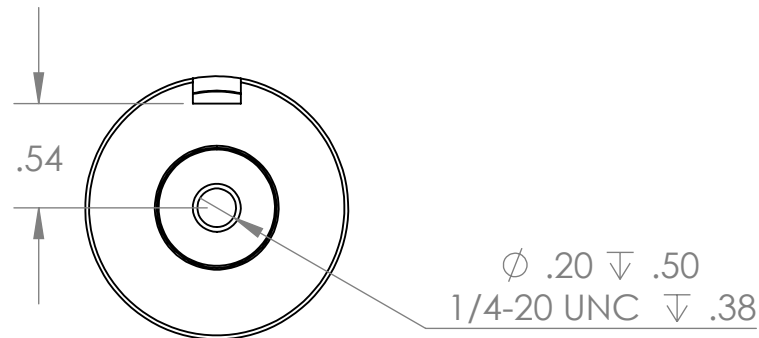
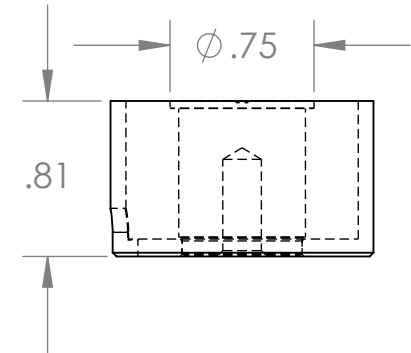
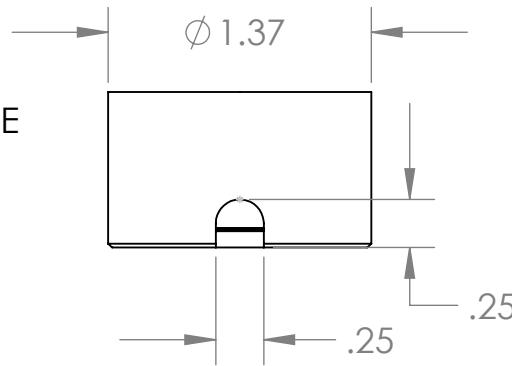


Isometric View

18" Long Leads
22 Ga. Teflon Type E



Electrical Specifications

Voltage: 12 VDC
Duty Cycle: Continuous
Resistance: 42 ohms \pm 10% (@ 20c)
Amps @ rated Volts: 0.29
Watts @ rated Volts: 3.43
Holding: 44 lbs (1/4" Thick 1215 CRS @ 20c)
Operating Temp: -40c to 60c (range)

Additional Components

Screw: N/A
Spring: N/A
Spiral Pin: N/A
Potting: United Resin Corp. (El-cast Black)

Finish: Housing - Zinc or Electroless Nickel Plating
(0.0002-0.0003")

PROPRIETARY AND CONFIDENTIAL
 THE INFORMATION CONTAINED IN THIS DRAWING IS THE SOLE PROPERTY OF APW COMPANY. ANY REPRODUCTION IN PART OR AS A WHOLE WITHOUT THE WRITTEN PERMISSION OF APW COMPANY IS STRICTLY PROHIBITED.

Client	Client P/N	UNLESS OTHERWISE SPECIFIED:		NAME	DATE	APW COMPANY	
		DIMENSIONS ARE IN INCHES TOLERANCES: FRACTIONAL \pm .010 ANGULAR: MACH \pm BEND \pm TWO PLACE DECIMAL \pm .005 THREE PLACE DECIMAL \pm .003		DRAWN	D.P.	01.09.2024	TITLE:
		Break Sharp edges 0.002" unless otherwise noted		CHECKED			P/N: EM137-12-212-A
		MATERIAL		ENG APPR.			
		FINISH		MFG APPR.			SIZE DWG. NO. REV
NEXT ASSY	USED ON	DO NOT SCALE DRAWING		Q.A.			A 7023
APPLICATION				COMMENTS:			SCALE: 1:1 WEIGHT: SHEET 1 OF 1