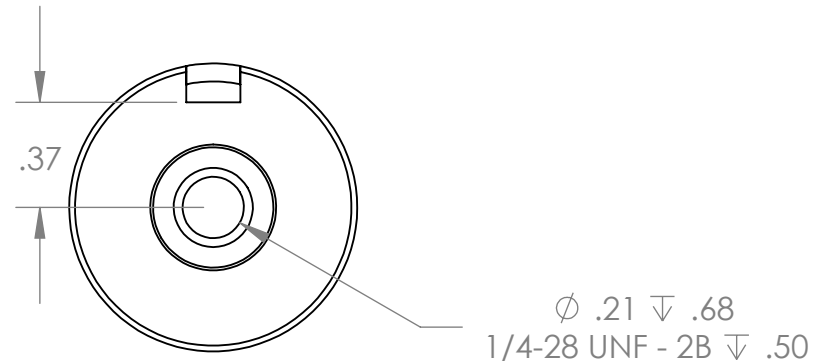
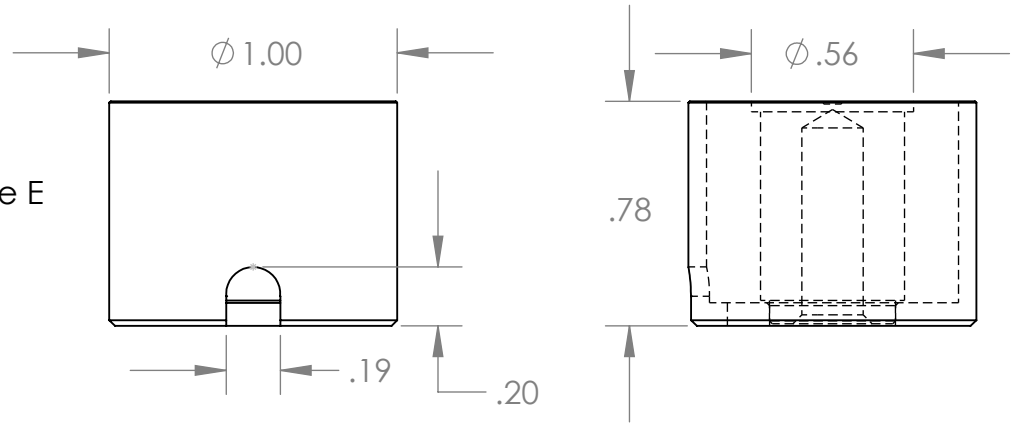


Isometric View



Electrical Specifications

- Voltage:** 12 VDC
- Duty Cycle:** Continuous
- Resistance:** 36.7ohms \pm 10% (@ 20c)
- Amps @ rated Volts:** 0.33
- Watts @ rated Volts:** 4.0
- Holding:** 25 lbs (1/4" Thick 1215 CRS @ 20c)
- Operating Temp:** -40c to 60c (range)

Additional Components

- Screw:** N/A
- Spring:** N/A
- Spiral Pin:** N/A
- Potting:** United Resin Corp. (El-cast Black)
- Finish:** Housing - Zinc or Electroless Nickel Plating (0.0002-0.0003")

PROPRIETARY AND CONFIDENTIAL
 THE INFORMATION CONTAINED IN THIS DRAWING IS THE SOLE PROPERTY OF APW COMPANY. ANY REPRODUCTION IN PART OR AS A WHOLE WITHOUT THE WRITTEN PERMISSION OF APW COMPANY IS STRICTLY PROHIBITED.

		UNLESS OTHERWISE SPECIFIED:	NAME	DATE	APW COMPANY	
		DIMENSIONS ARE IN INCHES	DRAWN	D.P.		01.08.2024
		TOLERANCES:	CHECKED			
		FRACTIONAL \pm .010	ENG APPR.			
		ANGULAR: MACH \pm BEND \pm TWO PLACE DECIMAL \pm .005 THREE PLACE DECIMAL \pm .003	MFG APPR.			
		Break Sharp edges 0.002" unless otherwise noted	Q.A.			
		MATERIAL	COMMENTS:			TITLE:
		FINISH				P/N: EM100-12-212-A
NEXT ASSY	USED ON					SIZE DWG. NO. REV
						A 7021
APPLICATION		DO NOT SCALE DRAWING				SCALE: 3:2 WEIGHT: SHEET 1 OF 1