

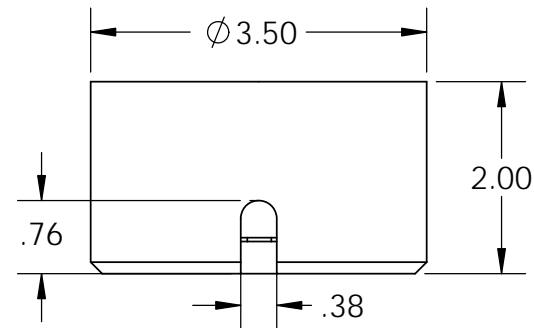
## Electrical Specifications

**Voltage:** 115 VDC  
**Duty Cycle:** Continuous  
**Resistance:** 200 ohms  $\pm$  10% (@ 20c)  
**Amps @ rated Volts:** .58  
**Watts @ rated Volts:** 66  
**Holding:** 600 lbs (1/4" Thick 1215 CRS @ 20c)  
**Operating Temp:** -40c to 60c (range)

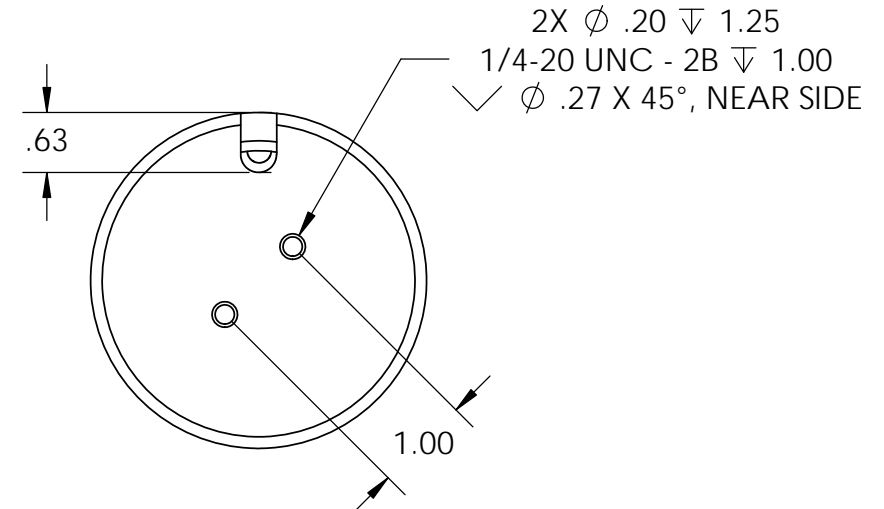
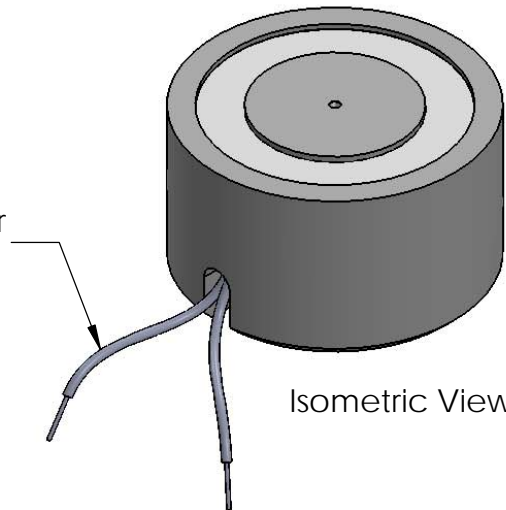
## Additional Components

**Screw:** N/A  
**Spring:** N/A  
**Spiral Pin:** N/A  
**Potting:** N/A

**Finish:** Housing - Zinc or Electroless Nickel Plating  
 (0.0002-0.0003")



8" from coil to rectifier 11" after  
18 Ga. Type 1015 UL



		UNLESS OTHERWISE SPECIFIED:		NAME	DATE	<b>APW COMPANY</b>	
		DIMENSIONS ARE IN INCHES TOLERANCES: FRACTIONAL $\pm$ .015 ANGULAR: MACH $\pm$ 2 BEND $\pm$ 2 TWO PLACE DECIMAL $\pm$ .005 THREE PLACE DECIMAL $\pm$ .003		DRAWN	K.H.		
		INTERPRET GEOMETRIC TOLERANCING PER: ANSI		CHECKED	J.K.	08.02.11	TITLE: P/N: EM350-115ac-222
		MATERIAL		ENG APPR.	J.K.	08.02.11	
		FINISH		MFG APPR.	J.K.	08.02.11	
NEXT ASSY		USED ON		Q.A.			
APPLICATION		DO NOT SCALE DRAWING		COMMENTS:			
				SIZE	DWG. NO.	REV	
				<b>A</b>	<b>6522</b>		
				SCALE: 1:2	WEIGHT:	SHEET 1 OF 1	

**PROPRIETARY AND CONFIDENTIAL**  
 THE INFORMATION CONTAINED IN THIS  
 DRAWING IS THE SOLE PROPERTY OF  
 APW COMPANY. ANY REPRODUCTION  
 IN PART OR AS A WHOLE WITHOUT THE  
 WRITTEN PERMISSION OF  
 APW COMPANY IS PROHIBITED.