

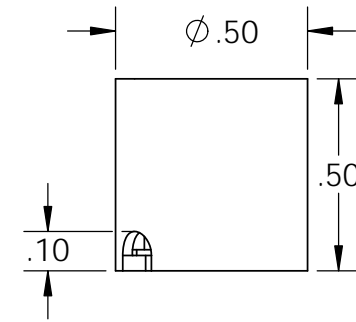
## Electrical Specifications

**Voltage:** 9 VDC  
**Duty Cycle:** Continuous  
**Resistance:** 78 ohms  $\pm$  10% (@ 20c)  
**Amps @ rated Volts:** 0.11  
**Watts @ rated Volts:** 1.0  
**Holding:** 2 lbs (1/4" Thick 1215 CRS @ 20c)  
**Operating Temp:** -40c to 60c (range)

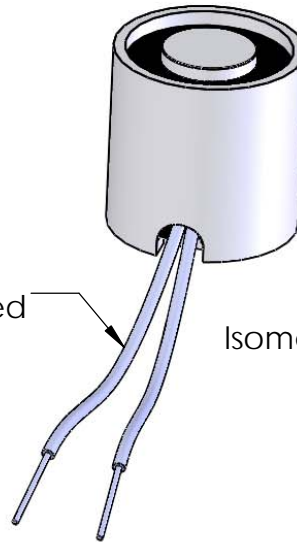
## Additional Components

**Screw:** N/A  
**Spring:** N/A  
**Spiral Pin:** N/A  
**Potting:** N/A

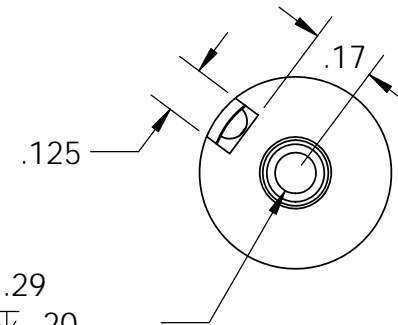
**Finish:** Housing - Zinc or Electroless Nickel Plating  
 (0.0002-0.0003")



12" Long (2x)  
 .5 Strip ends  
 28 ga. (7/36)  
 Teflon Coated  
 Lead Wires  
 (Yellow)



Isometric View



$\phi$  .11  $\nabla$  .29  
 6-32 UNC  $\nabla$  .20  
 $\surd$   $\phi$  .15 X 90°, NEAR SIDE

**PROPRIETARY AND CONFIDENTIAL**  
 THE INFORMATION CONTAINED IN THIS DRAWING IS THE SOLE PROPERTY OF APW COMPANY. ANY REPRODUCTION IN PART OR AS A WHOLE WITHOUT THE WRITTEN PERMISSION OF APW COMPANY IS PROHIBITED.

		UNLESS OTHERWISE SPECIFIED:		NAME	DATE	<b>APW COMPANY</b>	
		DIMENSIONS ARE IN INCHES TOLERANCES: FRACTIONAL $\pm$ .015 ANGULAR: MACH $\pm$ 2 BEND $\pm$ 2 TWO PLACE DECIMAL $\pm$ .005 THREE PLACE DECIMAL $\pm$ .003		DRAWN	K.H.		
		INTERPRET GEOMETRIC TOLERANCING PER: ANSI		CHECKED	J.K.	07.08.11	TITLE:  EM050-9-222-A
		MATERIAL		ENG APPR.	J.K.	07.08.11	
		FINISH		MFG APPR.	J.K.	07.08.11	
NEXT ASSY	USED ON			Q.A.			
APPLICATION		DO NOT SCALE DRAWING		COMMENTS:		SIZE <b>A</b>	DWG. NO. <b>6519</b>
						SCALE: 2:1	WEIGHT:
						SHEET 1 OF 1	