

Electrical Specifications

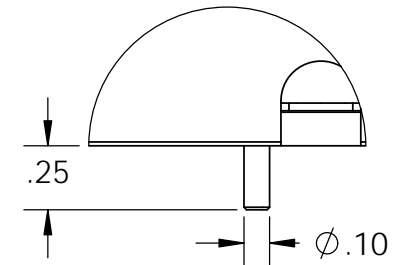
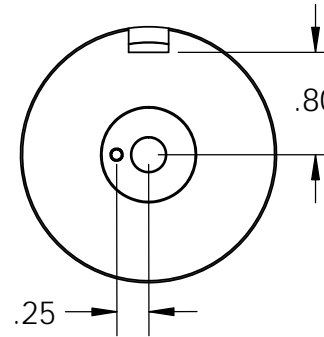
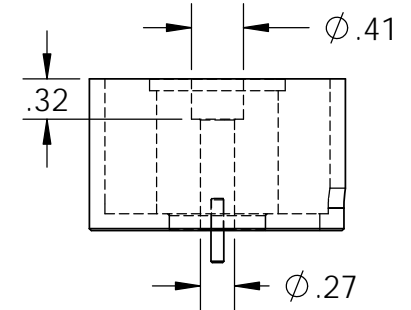
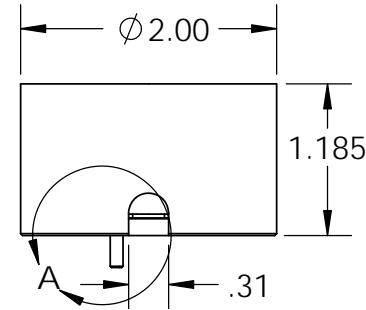
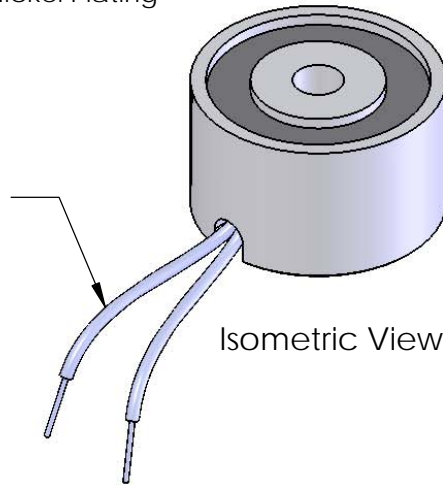
Voltage: 12 VDC
Duty Cycle: Continuous
Resistance: 20.5 ohms \pm 10% (@ 20c)
Amps @ rated Volts: 0.58
Watts @ rated Volts: 7.0
Holding: 140 lbs (1/4" Thick 1215 CRS @ 20c)
Operating Temp: -40c to 60c (range)

Additional Components

Screw: 1/4-20 x 1 1/4" Long (Hex Socket Head Cap) w/Nylok
Spring: N/A
Spiral Pin: N/A
Potting: United Resin Corp. (El-cast Black)

Finish: Housing - Zinc or Electroless Nickel Plating (0.0002-0.0003")

18" Long Leads
 18 Ga. Type 1015 UL



DETAIL A
 SCALE 2 : 1.5

PROPRIETARY AND CONFIDENTIAL
 THE INFORMATION CONTAINED IN THIS DRAWING IS THE SOLE PROPERTY OF APW COMPANY. ANY REPRODUCTION IN PART OR AS A WHOLE WITHOUT THE WRITTEN PERMISSION OF APW COMPANY IS PROHIBITED.

		UNLESS OTHERWISE SPECIFIED:		NAME	DATE	APW COMPANY		
		DIMENSIONS ARE IN INCHES TOLERANCES: FRACTIONAL \pm .015 ANGULAR: MACH \pm 2 BEND \pm 2 TWO PLACE DECIMAL \pm .005 THREE PLACE DECIMAL \pm .003	DRAWN	K.H.	07.15.11			TITLE: P/N: EM200-12-211
		INTERPRET GEOMETRIC TOLERANCING PER: ANSI	CHECKED	J.K.	07.15.11	SIZE A	DWG. NO. 6473	
		MATERIAL	ENG APPR.	J.K.	07.15.11			SCALE: 2:3
		FINISH	MFG APPR.	J.K.	07.15.11			
NEXT ASSY	USED ON		Q.A.					
APPLICATION		DO NOT SCALE DRAWING	COMMENTS:					