

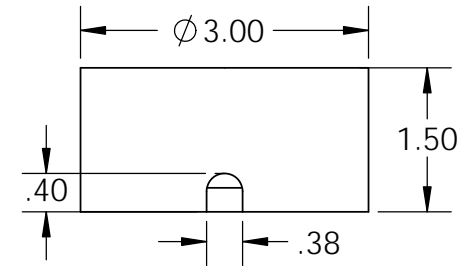
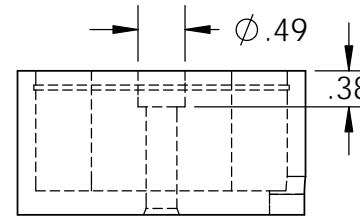
## Electrical Specifications

**Voltage:** 3 VDC  
**Duty Cycle:** Continuous  
**Resistance:** .56 ohms  $\pm$  10% (@ 20c)  
**Amps @ rated Volts:** 5.0  
**Watts @ rated Volts:** 15.0  
**Holding:** 400 lbs (1/4" Thick 1215 CRS @ 20c)  
**Operating Temp:** -40c to 60c (range)

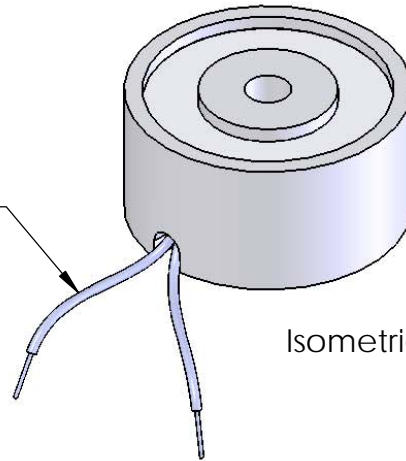
## Additional Components

**Screw:** 5/16-18 x 1 1/2" Long (Socket Head Cap Screw) w/Nylok  
**Spring:** N/A  
**Spiral Pin:** N/A  
**Potting:** N/A

**Finish:** Housing - Zinc or Electroless Nickel Plating  
 (0.0002-0.0003")

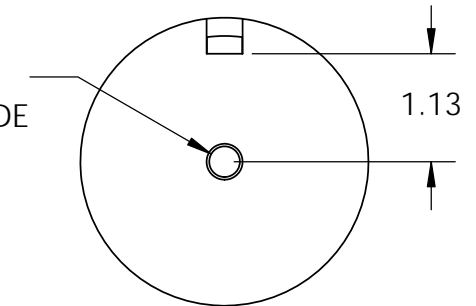


18" Long Leads  
 18 Ga. Type 1015 UL



Isometric View

$\phi$  .32 THRU ALL  
 3/8-16 UNC - 2B  $\nabla$  1.13  
 $\checkmark$   $\phi$  .38 X 45°, NEAR SIDE



**PROPRIETARY AND CONFIDENTIAL**  
 THE INFORMATION CONTAINED IN THIS DRAWING IS THE SOLE PROPERTY OF APW COMPANY. ANY REPRODUCTION IN PART OR AS A WHOLE WITHOUT THE WRITTEN PERMISSION OF APW COMPANY IS PROHIBITED.

|             |         | UNLESS OTHERWISE SPECIFIED:  |           | NAME | DATE     |
|-------------|---------|--|-----------|------|----------|
|             |         | DIMENSIONS ARE IN INCHES<br>TOLERANCES:<br>FRACTIONAL $\pm$ .015<br>ANGULAR: MACH $\pm$ 2 BEND $\pm$ 2<br>TWO PLACE DECIMAL $\pm$ .005<br>THREE PLACE DECIMAL $\pm$ .003 | DRAWN     | K.H. | 07.15.11 |
|             |         |  | CHECKED   | J.K. | 07.15.11 |
|             |         |  | ENG APPR. | J.K. | 07.15.11 |
|             |         |  | MFG APPR. | J.K. | 07.15.11 |
|             |         | INTERPRET GEOMETRIC TOLERANCING PER: ANSI  | Q.A.      |      |          |
|             |         | MATERIAL   | COMMENTS: |      |          |
|             |         | FINISH   |           |      |          |
| NEXT ASSY   | USED ON |  |           |      |          |
| APPLICATION |         | DO NOT SCALE DRAWING   |           |      |          |

**APW COMPANY**

TITLE:

P/N: EM300-3-222

SIZE  
**A**

DWG. NO.

**6351**

REV

SCALE: 1:2

WEIGHT:

SHEET 1 OF 1