

## Electrical Specifications

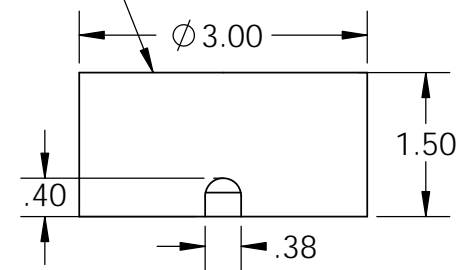
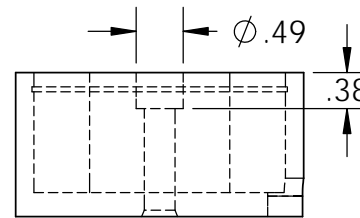
**Voltage:** 6 VDC  
**Duty Cycle:** Continuous  
**Resistance:** 2.56 ohms  $\pm$  10% (@ 20c)  
**Amps @ rated Volts:** 2.50  
**Watts @ rated Volts:** 15.0  
**Holding:** 300 lbs (1/4" Thick 1215 CRS @ 20c)  
**Operating Temp:** -40c to 60c (range)

## Additional Components

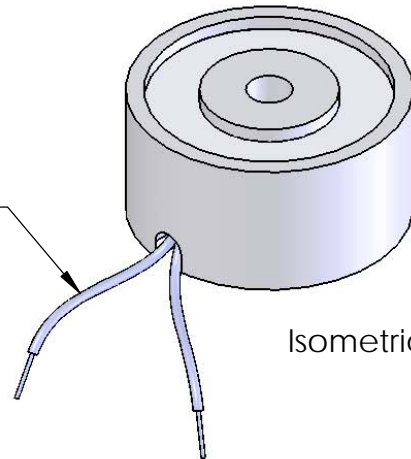
**Screw:** 5/16-18 x 1 1/2" Long (Socket Head Cap Screw) w/Nylok  
**Spring:** N/A  
**Spiral Pin:** N/A  
**Potting:** N/A

**Finish:** Housing - Zinc or Electroless Nickel Plating  
 (0.0002-0.0003")

Center Post Recessed  
 (.003-.005)  
 Quick Release

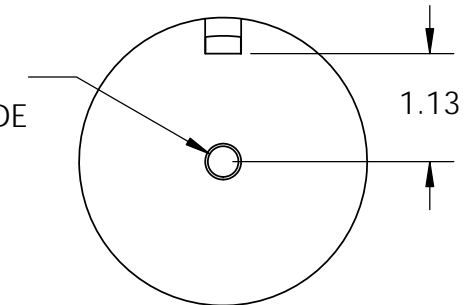


18" Long Leads  
 18 Ga. Type 1015 UL



Isometric View

$\phi$  .32 THRU ALL  
 3/8-16 UNC - 2B  $\nabla$  1.13  
 $\checkmark$   $\phi$  .38 X 45°, NEAR SIDE



**PROPRIETARY AND CONFIDENTIAL**  
 THE INFORMATION CONTAINED IN THIS DRAWING IS THE SOLE PROPERTY OF APW COMPANY. ANY REPRODUCTION IN PART OR AS A WHOLE WITHOUT THE WRITTEN PERMISSION OF APW COMPANY IS PROHIBITED.

		UNLESS OTHERWISE SPECIFIED:	NAME	DATE
		DIMENSIONS ARE IN INCHES	DRAWN	K.H. 07.15.11
		TOLERANCES:	CHECKED	J.K. 07.15.11
		FRACTIONAL $\pm$ .015	ENG APPR.	J.K. 07.15.11
		ANGULAR: MACH $\pm$ 2 BEND $\pm$ 2	MFG APPR.	J.K. 07.15.11
		TWO PLACE DECIMAL $\pm$ .005	Q.A.	
		THREE PLACE DECIMAL $\pm$ .003	COMMENTS:	
		INTERPRET GEOMETRIC TOLERANCING PER: ANSI		
		MATERIAL		
NEXT ASSY	USED ON	FINISH		
APPLICATION		DO NOT SCALE DRAWING		

APW COMPANY

TITLE:

P/N: EM300-6-122

SIZE	DWG. NO.	REV
<b>A</b>	6297	
SCALE: 1:2	WEIGHT:	SHEET 1 OF 1