

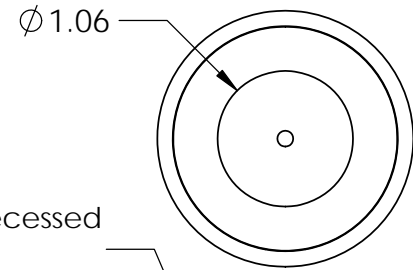
## Electrical Specifications

**Voltage:** 120 VAC  
**Duty Cycle:** Intermittent  
**Resistance:** 562 ohms  $\pm$  10% (@ 20c)  
**Amps @ rated Volts:** 0.22  
**Watts @ rated Volts:** 25.7  
**Holding:** 140 lbs (1/4" Thick 1215 CRS @ 20c)  
**Operating Temp:** -40c to 60c (range)

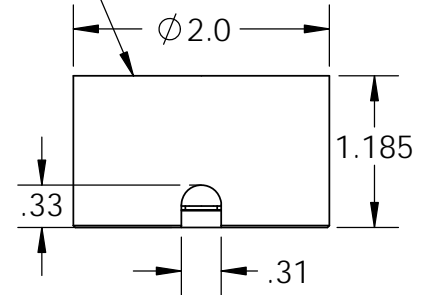
## Additional Components

**Screw:** N/A  
**Spring:** N/A  
**Spiral Pin:** N/A  
**Potting:** United Resin Corp. (El-cast Black)

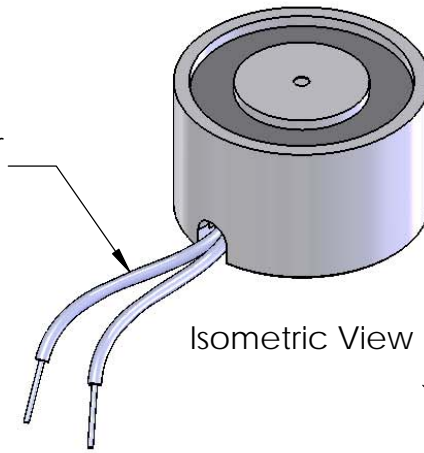
**Finish:** Electroless Nickel Plating  
 (0.0002-0.0003")



Center Post Recessed  
(.002-.004)  
Quick Release

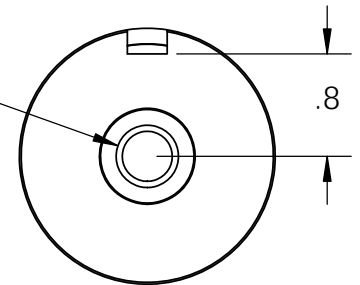


8" from coil to rectifier 11" after  
18 Ga. Type 1015 UL



Isometric View

7/16-20 UNF  $\nabla$  .88  
 $\checkmark$   $\phi$  .49 X 45°, NEAR SIDE



**PROPRIETARY AND CONFIDENTIAL**  
 THE INFORMATION CONTAINED IN THIS DRAWING IS THE SOLE PROPERTY OF APW COMPANY. ANY REPRODUCTION IN PART OR AS A WHOLE WITHOUT THE WRITTEN PERMISSION OF APW COMPANY IS PROHIBITED.

		UNLESS OTHERWISE SPECIFIED:		NAME	DATE
		DIMENSIONS ARE IN INCHES TOLERANCES: FRACTIONAL $\pm$ .015 ANGULAR: MACH $\pm$ 2 BEND $\pm$ 2 TWO PLACE DECIMAL $\pm$ .005 THREE PLACE DECIMAL $\pm$ .003		DRAWN	K.H. 07.15.11
				CHECKED	J.K. 07.15.11
				ENG APPR.	J.K. 07.15.11
				MFG APPR.	J.K. 07.15.11
		INTERPRET GEOMETRIC TOLERANCING PER: ANSI		Q.A.	
		MATERIAL	COMMENTS:		
		FINISH			
NEXT ASSY	USED ON				
APPLICATION		DO NOT SCALE DRAWING			

**APW COMPANY**

TITLE:

P/N: EM200-115ac-112-AB

SIZE	DWG. NO.	REV
<b>A</b>	<b>6191</b>	
SCALE: 2:3	WEIGHT:	SHEET 1 OF 1