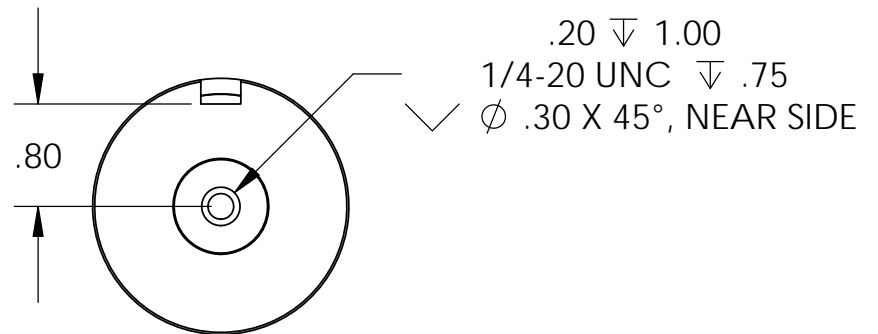
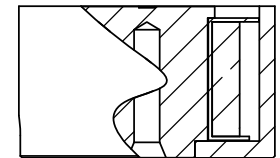
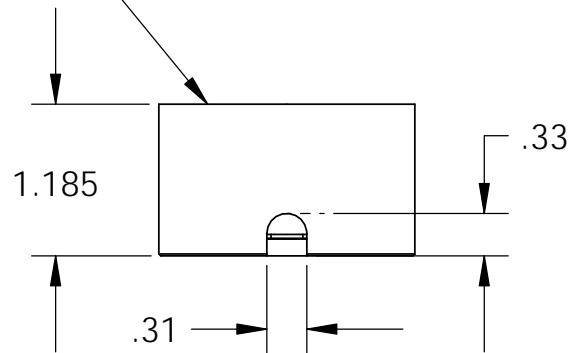
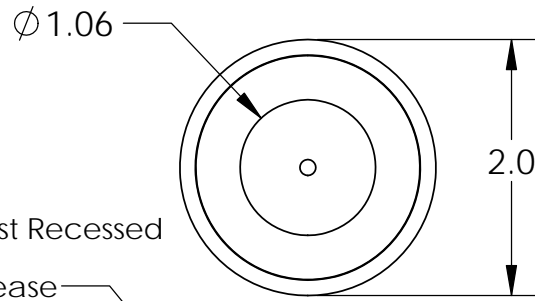


Isometric View

18" Long Leads  
18 Ga. Type UL 1015



**Electrical Specifications**

- Voltage:** 24 VDC
- Duty Cycle:** Continuous
- Resistance:** 82 ohms  $\pm$  10% (@ 20c)
- Amps @ rated Volts:** 0.29
- Watts @ rated Volts:** 7.0
- Holding:** 105 lbs (1/4" Thick 1215 CRS @ 20c)
- Operating Temp:** -40c to 60c (range)

**Additional Components**

- Screw:** N/A
- Spring:** N/A
- Spiral Pin:** N/A
- Potting:** N/A
- Rectifier:** N/A
- Finish:** Housing - Zinc or Electroless Nickel Plating (0.0002-0.0003")

<p><b>PROPRIETARY AND CONFIDENTIAL</b></p> <p>THE INFORMATION CONTAINED IN THIS DRAWING IS THE SOLE PROPERTY OF APW COMPANY. ANY REPRODUCTION IN PART OR AS A WHOLE WITHOUT THE WRITTEN PERMISSION OF APW COMPANY IS PROHIBITED.</p>			<p>UNLESS OTHERWISE SPECIFIED:</p> <p>DIMENSIONS ARE IN INCHES</p> <p>TOLERANCES:</p> <p>FRACTIONAL <math>\pm</math> .015</p> <p>ANGULAR: MACH <math>\pm</math> 2 BEND <math>\pm</math> 2</p> <p>TWO PLACE DECIMAL <math>\pm</math> .005</p> <p>THREE PLACE DECIMAL <math>\pm</math> .003</p>		NAME	DATE	<p><b>APW COMPANY</b></p> <p>TITLE:</p> <p>P/N: EM200-24-122-A</p>									
					DRAWN	K.H.		07.21.11								
					CHECKED	J.K.		07.21.11								
					ENG APPR.	J.K.		07.21.11								
					MFG APPR.	J.K.		07.21.11								
		INTERPRET GEOMETRIC TOLERANCING PER: ANSI		Q.A.												
		MATERIAL		COMMENTS:												
		FINISH														
	NEXT ASSY	USED ON	APPLICATION		DO NOT SCALE DRAWING		<table border="1" style="width: 100%;"> <tr> <td style="width: 15%;">SIZE</td> <td style="width: 55%;">DWG. NO.</td> <td style="width: 30%;">REV</td> </tr> <tr> <td style="text-align: center; font-size: 2em;"><b>A</b></td> <td style="text-align: center; font-size: 1.5em;"><b>6175</b></td> <td></td> </tr> <tr> <td>SCALE: 2:3</td> <td>WEIGHT:</td> <td>SHEET 1 OF 1</td> </tr> </table>	SIZE	DWG. NO.	REV	<b>A</b>	<b>6175</b>		SCALE: 2:3	WEIGHT:	SHEET 1 OF 1
SIZE	DWG. NO.	REV														
<b>A</b>	<b>6175</b>															
SCALE: 2:3	WEIGHT:	SHEET 1 OF 1														