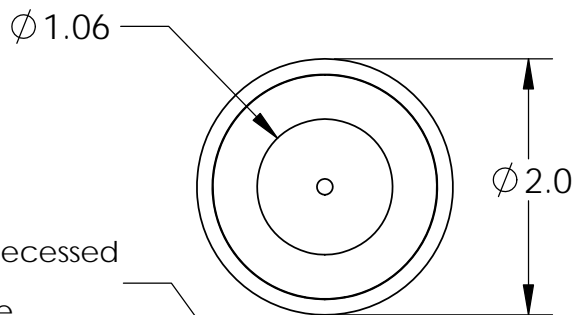
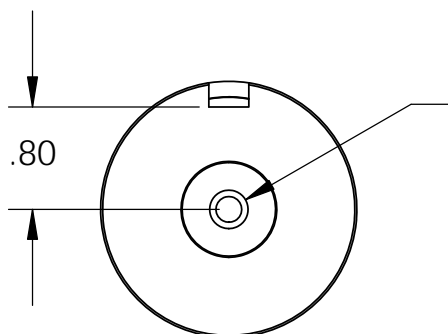
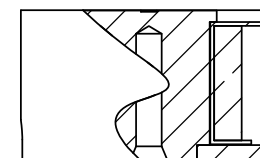
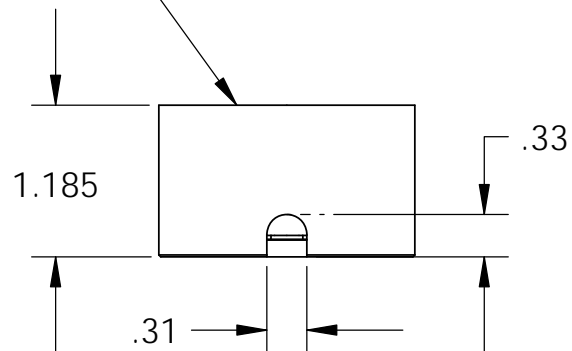


Isometric View

18" Long Leads
18 Ga. Type UL 1015



Center Post Recessed
(.003-.005)
Quick Release



$\phi .20 \nabla 1.00$
1/4-20 UNC $\nabla .75$
 $\phi .30 \times 45^\circ$, NEAR SIDE

Electrical Specifications

- Voltage:** 110 VDC
- Duty Cycle:** Continuous
- Resistance:** 1380 ohms $\pm 10\%$ (@ 20c)
- Amps @ rated Volts:** 0.06
- Watts @ rated Volts:** 7.0
- Holding:** 105 lbs (1/4" Thick 1215 CRS @ 20c)
- Operating Temp:** -40c to 60c (range)

Additional Components

- Screw:** N/A
- Spring:** N/A
- Spiral Pin:** N/A
- Potting:** N/A
- Rectifier:** N/A

Finish: Housing - Zinc or Electroless Nickel Plating
(0.0002-0.0003")

PROPRIETARY AND CONFIDENTIAL
THE INFORMATION CONTAINED IN THIS DRAWING IS THE SOLE PROPERTY OF APW COMPANY. ANY REPRODUCTION IN PART OR AS A WHOLE WITHOUT THE WRITTEN PERMISSION OF APW COMPANY IS PROHIBITED.

		UNLESS OTHERWISE SPECIFIED:		NAME	DATE
		DIMENSIONS ARE IN INCHES	DRAWN	K.H.	07.21.11
		TOLERANCES:	CHECKED	J.K.	07.21.11
		FRACTIONAL $\pm .015$	ENG APPR.	J.K.	07.21.11
		ANGULAR: MACH ± 2 BEND ± 2	MFG APPR.	J.K.	07.21.11
		TWO PLACE DECIMAL $\pm .005$			
		THREE PLACE DECIMAL $\pm .003$			
		INTERPRET GEOMETRIC TOLERANCING PER: ANSI	Q.A.		
		MATERIAL	COMMENTS:		
NEXT ASSY	USED ON	FINISH			
APPLICATION		DO NOT SCALE DRAWING			

APW COMPANY		
TITLE:		
P/N: EM200-110-122-A		
SIZE	DWG. NO.	REV
A	6174	
SCALE: 2:3	WEIGHT:	SHEET 1 OF 1