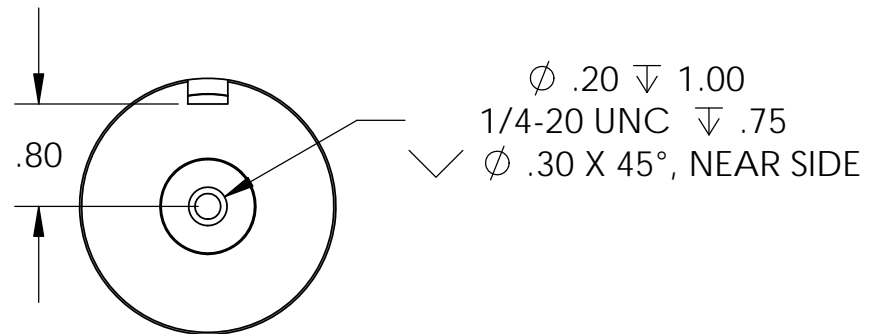
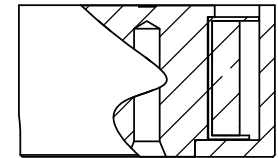
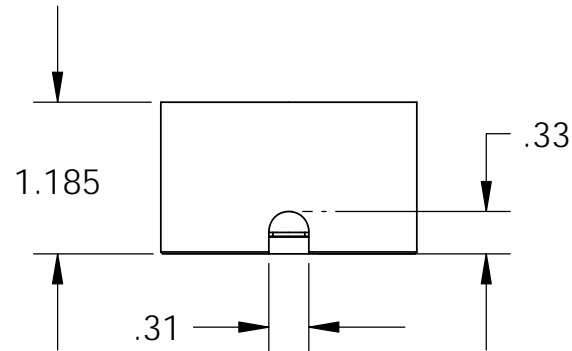
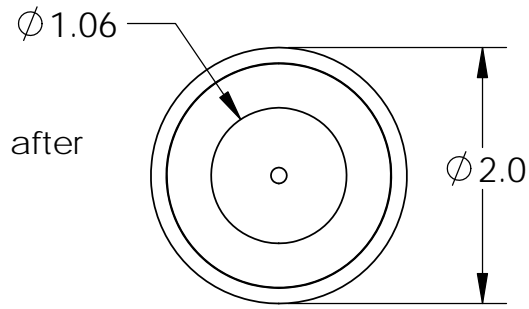


Isometric View

8" from coil to rectifier 11" after  
18 Ga. Type 1015 UL



**Electrical Specifications**

- Voltage:** 115 VAC
- Duty Cycle:** Continuous
- Resistance:** 1388 ohms  $\pm 10\%$  (@ 20c)
- Amps @ rated Volts:** 0.06
- Watts @ rated Volts:** 7.0
- Holding:** 140 lbs (1/4" Thick 1215 CRS @ 20c)
- Operating Temp:** -40c to 60c (range)

**Additional Components**

- Screw:** N/A
- Spring:** N/A
- Spiral Pin:** N/A
- Potting:** N/A
- Rectifier:** N/A
  
- Finish:** Housing - Zinc or Electroless Nickel Plating (0.0002-0.0003")

<p style="text-align: center;"><b>PROPRIETARY AND CONFIDENTIAL</b></p> <p>THE INFORMATION CONTAINED IN THIS DRAWING IS THE SOLE PROPERTY OF APW COMPANY. ANY REPRODUCTION IN PART OR AS A WHOLE WITHOUT THE WRITTEN PERMISSION OF APW COMPANY IS PROHIBITED.</p>			UNLESS OTHERWISE SPECIFIED:		NAME	DATE	<b>APW COMPANY</b>		
			DIMENSIONS ARE IN INCHES	DRAWN	K.H.	07.21.11	TITLE:  P/N: EM200-115ac-222-A		
			TOLERANCES:	CHECKED	J.K.	07.21.11			
			FRACTIONAL $\pm .015$	ENG APPR.	J.K.	07.21.11			
			ANGULAR: MACH $\pm 2$ BEND $\pm 2$	MFG APPR.	J.K.	07.21.11			
		TWO PLACE DECIMAL $\pm .005$	Q.A.				SIZE <b>A</b> DWG. NO. <b>6162</b> REV		
		THREE PLACE DECIMAL $\pm .003$	COMMENTS:			SCALE: 2:3 WEIGHT: SHEET 1 OF 1			
		INTERPRET GEOMETRIC TOLERANCING PER: ANSI							
		MATERIAL							
		FINISH							
	NEXT ASSY	USED ON							
	APPLICATION		DO NOT SCALE DRAWING						