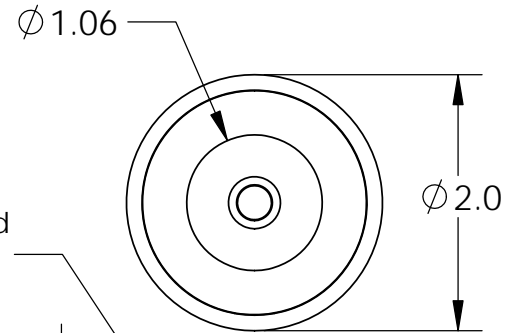


Isometric View

8" from coil to rectifier 11" after  
18 Ga. Type 1015 UL

Center Post Recessed  
(.003-.005)  
Quick Release

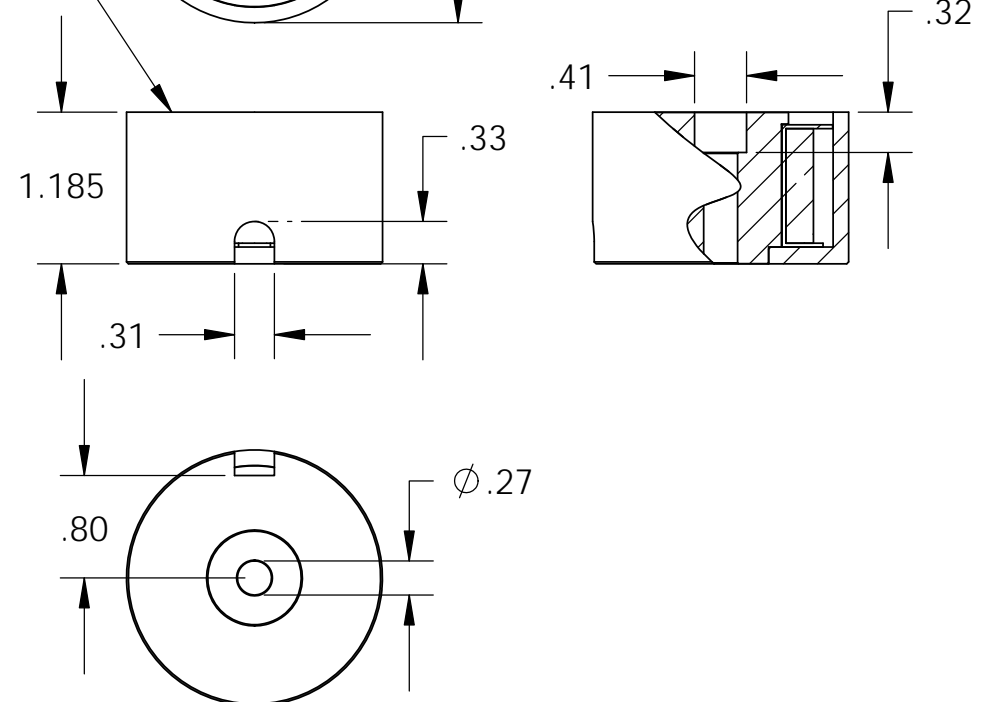


### Electrical Specifications

**Voltage:** 115 VAC  
**Duty Cycle:** Continuous  
**Resistance:** 562 ohms  $\pm 10\%$  (@ 20c)  
**Amps @ rated Volts:** 0.06  
**Watts @ rated Volts:** 7.0  
**Holding:** 105 lbs (1/4" Thick 1215 CRS @ 20c)  
**Operating Temp:** -40c to 60c (range)

### Additional Components

**Screw:** 1/4-20 x 1 1/4" Long (Hex Socket Head Cap) w/Nylok  
**Spring:** N/A  
**Spiral Pin:** N/A  
**Potting:** N/A  
  
**Finish:** Housing - Zinc or Electroless Nickel Plating  
 (0.0002-0.0003")



		UNLESS OTHERWISE SPECIFIED:			NAME		DATE		<b>APW COMPANY</b>			
		DIMENSIONS ARE IN INCHES			DRAWN		K.H.					07.14.11
		TOLERANCES:			CHECKED		J.K.		07.14.11		TITLE: P/N: EM200-115ac-122	
		FRACTIONAL $\pm .015$			ENG APPR.		J.K.		07.14.11			
ANGULAR: MACH $\pm 2$ BEND $\pm 2$			MFG APPR.		J.K.		07.14.11					
TWO PLACE DECIMAL $\pm .010$			Q.A.									
THREE PLACE DECIMAL $\pm .005$			COMMENTS:									
INTERPRET GEOMETRIC TOLERANCING PER: ANSI			MATERIAL			SIZE		DWG. NO.		REV		
MATERIAL			FINISH			<b>A</b>		6072				
NEXT ASSY		USED ON	APPLICATION									SCALE: 1:2
DO NOT SCALE DRAWING												

**PROPRIETARY AND CONFIDENTIAL**  
 THE INFORMATION CONTAINED IN THIS DRAWING IS THE SOLE PROPERTY OF APW COMPANY. ANY REPRODUCTION IN PART OR AS A WHOLE WITHOUT THE WRITTEN PERMISSION OF APW COMPANY IS PROHIBITED.