

Isometric View

8" from coil to rectifier 11" after
18 Ga. Type 1015 UL

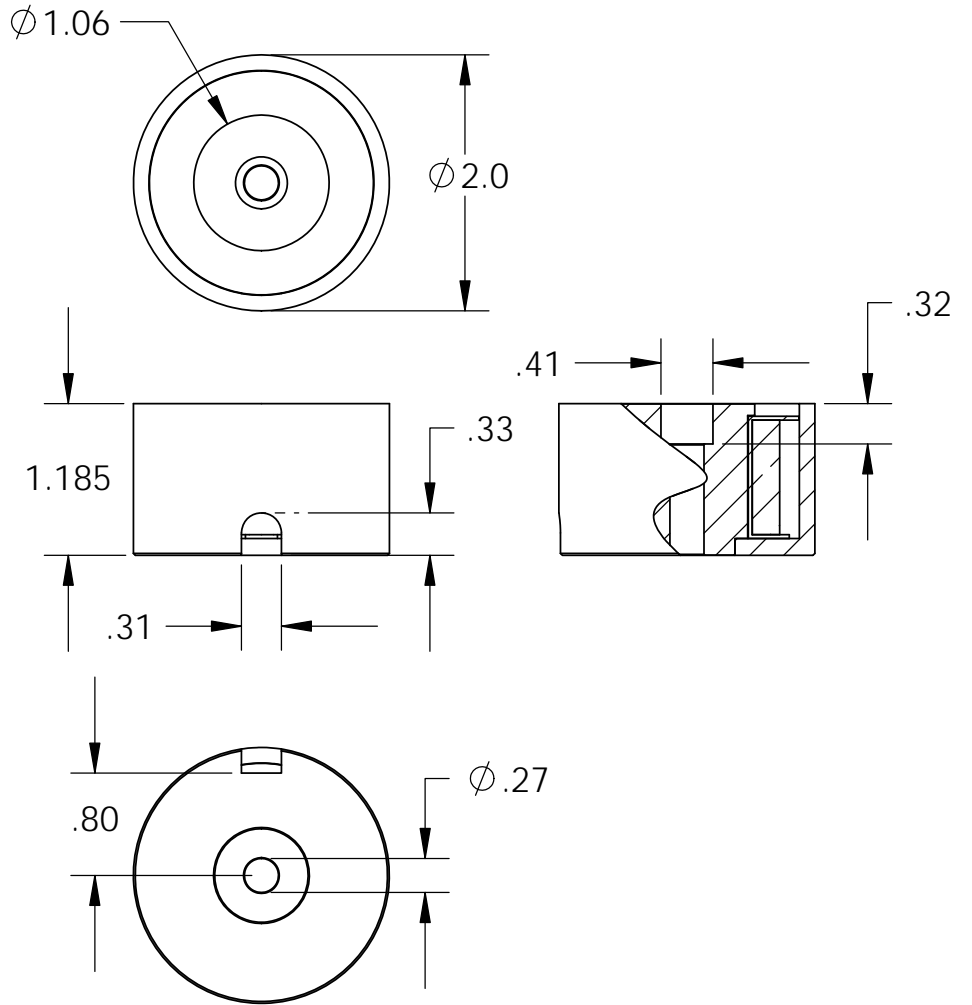
Electrical Specifications

- Voltage:** 115 VAC
- Duty Cycle:** Continuous
- Resistance:** 1388 ohms \pm 10% (@ 20c)
- Amps @ rated Volts:** 0.06
- Watts @ rated Volts:** 7.0
- Holding:** 140 lbs (1/4" Thick 1215 CRS @ 20c)
- Operating Temp:** -40c to 60c (range)

Additional Components

- Screw:** 1/4-20 x 1 1/4" Long (Hex Socket Head Cap) w/Nylok
- Spring:** N/A
- Spiral Pin:** N/A
- Potting:** N/A

- Finish:** Housing - Zinc or Electroless Nickel Plating
(0.0002-0.0003")



PROPRIETARY AND CONFIDENTIAL
THE INFORMATION CONTAINED IN THIS DRAWING IS THE SOLE PROPERTY OF APW COMPANY. ANY REPRODUCTION IN PART OR AS A WHOLE WITHOUT THE WRITTEN PERMISSION OF APW COMPANY IS PROHIBITED.

		UNLESS OTHERWISE SPECIFIED:		NAME	DATE
		DIMENSIONS ARE IN INCHES TOLERANCES: FRACTIONAL \pm .015 ANGULAR: MACH \pm 2 BEND \pm 2 TWO PLACE DECIMAL \pm .005 THREE PLACE DECIMAL \pm .003		DRAWN	K.H. 07.14.11
		INTERPRET GEOMETRIC TOLERANCING PER: ANSI		CHECKED	J.K. 07.14.11
		MATERIAL		ENG APPR.	J.K. 07.14.11
NEXT ASSY		USED ON		MFG APPR.	J.K. 07.14.11
APPLICATION		DO NOT SCALE DRAWING		Q.A.	
				COMMENTS:	

APW COMPANY		
TITLE: P/N: EM200-115ac-222		
SIZE A	DWG. NO. 6062	REV
SCALE: 2:3	WEIGHT:	SHEET 1 OF 1