

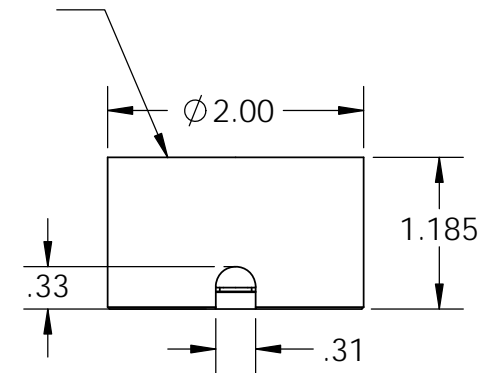
Electrical Specifications

Voltage: 110 VAC
Duty Cycle: Intermittent
Resistance: 1380 ohms \pm 10% (@ 20c)
Amps @ rated Volts: 0.06
Watts @ rated Volts: 7.0
Holding: 105 lbs (1/4" Thick 1215 CRS @ 20c)
Operating Temp: -40c to 60c (range)

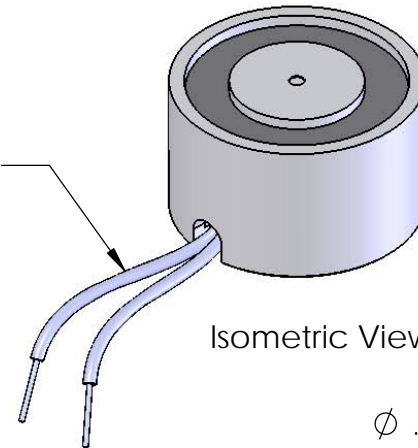
Center Post Recessed
 (.003-.005)
 Quick Release

Additional Components

Screw: N/A
Spring: N/A
Spiral Pin: N/A
Potting: United Resin Corp. (El-cast Black)
Finish: Housing - Zinc or Electroless Nickel Plating
 (0.0002-0.0003")

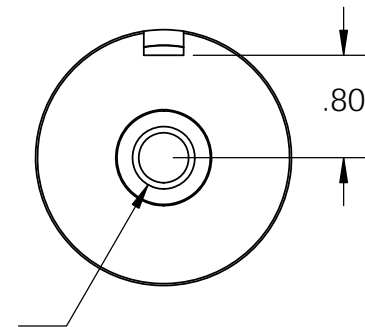


8" from coil to recifier. 11" after 18 Ga. Type 1015 UL



Isometric View

ϕ .39 ∇ 1.00
 7/16-20 UNF ∇ .88
 \surd ϕ .49 X 45°, NEAR SIDE



PROPRIETARY AND CONFIDENTIAL
 THE INFORMATION CONTAINED IN THIS DRAWING IS THE SOLE PROPERTY OF APW COMPANY. ANY REPRODUCTION IN PART OR AS A WHOLE WITHOUT THE WRITTEN PERMISSION OF APW COMPANY IS PROHIBITED.

		UNLESS OTHERWISE SPECIFIED:		NAME	DATE
		DIMENSIONS ARE IN INCHES TOLERANCES: FRACTIONAL \pm .015 ANGULAR: MACH \pm 2 BEND \pm 2 TWO PLACE DECIMAL \pm .005 THREE PLACE DECIMAL \pm .003	DRAWN	K.H.	07.15.11
			CHECKED	J.K.	07.15.11
			ENG APPR.	J.K.	07.15.11
			MFG APPR.	J.K.	07.15.11
		INTERPRET GEOMETRIC TOLERANCING PER: ANSI	Q.A.		
		MATERIAL	COMMENTS:		
		FINISH			
NEXT ASSY	USED ON				
APPLICATION		DO NOT SCALE DRAWING			

APW COMPANY		
TITLE:		
P/N: EM200-110-112-A		
SIZE	DWG. NO.	REV
A	6060	
SCALE: 1:2	WEIGHT:	SHEET 1 OF 1