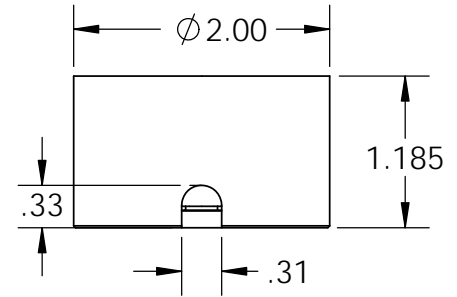
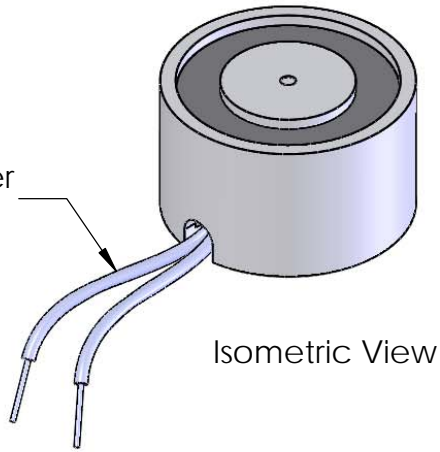


8" from coil to rectifier 11" after
18 Ga. Type 1015 UL



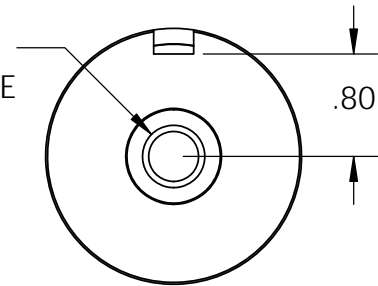
Electrical Specifications

- Voltage:** 110 VAC
- Duty Cycle:** Intermittent
- Resistance:** 1388 ohms \pm 10% (@ 20c)
- Amps @ rated Volts:** 0.06
- Watts @ rated Volts:** 7.0
- Holding:** 140 lbs (1/4" Thick 1215 CRS @ 20c)
- Operating Temp:** -40c to 60c (range)

Additional Components

- Screw:** N/A
- Spring:** N/A
- Spiral Pin:** N/A
- Potting:** United Resin Corp. (El-cast Black)
- Finish:** Housing - Zinc or Electroless Nickel Plating (0.0002-0.0003")

ϕ .39 ∇ 1.00
7/16-20 UNF ∇ .88
 \checkmark ϕ .49 X 45°, NEAR SIDE



PROPRIETARY AND CONFIDENTIAL
THE INFORMATION CONTAINED IN THIS DRAWING IS THE SOLE PROPERTY OF APW COMPANY. ANY REPRODUCTION IN PART OR AS A WHOLE WITHOUT THE WRITTEN PERMISSION OF APW COMPANY IS PROHIBITED.

		UNLESS OTHERWISE SPECIFIED:	NAME	DATE	APW COMPANY TITLE: P/N: EM200-110ac-212-A		
		DIMENSIONS ARE IN INCHES TOLERANCES: FRACTIONAL \pm .015 ANGULAR: MACH \pm 2 BEND \pm 2 TWO PLACE DECIMAL \pm .005 THREE PLACE DECIMAL \pm .003	DRAWN	K.H.			07.15.11
		INTERPRET GEOMETRIC TOLERANCING PER: ANSI	CHECKED	J.K.			07.15.11
		MATERIAL	ENG APPR.	J.K.			07.15.11
NEXT ASSY	USED ON	FINISH	MFG APPR.	J.K.	07.15.11	SIZE A DWG. NO. 6059 REV	
APPLICATION		DO NOT SCALE DRAWING	COMMENTS:				
			SCALE: 2:3	WEIGHT:	SHEET 1 OF 1		