

Electrical Specifications

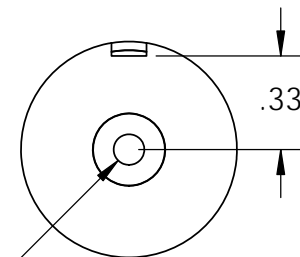
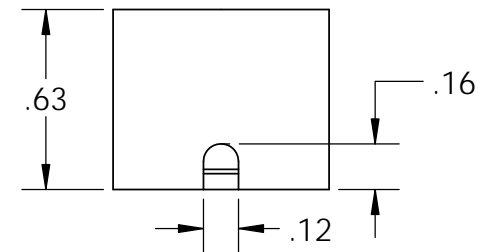
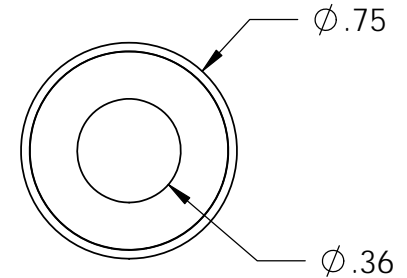
Voltage: 24 VDC
Duty Cycle: Continuous
Resistance: 585 ohms \pm 10% (@ 20c)
Amps @ rated Volts: 0.04
Watts @ rated Volts: 1.0
Holding: 6 lbs (1/4" Thick 1215 CRS @ 20c)
Operating Temp: -40c to 60c (range)

Additional Components

Screw: N/A
Spring: N/A
Spiral Pin: N/A
Potting: United Resin Corp. (El-cast Black)

Finish: Housing - Zinc or Electroless Nickel Plating
 (0.0002-0.0003")

REVISIONS			
REV.	DESCRIPTION	DATE	APPROVED
A	Noted Lead Wire Colors per MFG Specifications	12/23/2015	J.K.



ϕ .11 ∇ .51
 6-32 UNC ∇ .35

10" Long Leads
26 Ga. Teflon Type E

Black
Lead Wire
(Winding Finish)

Isometric View

White ^(A)
Lead Wire
(Winding Start)

PROPRIETARY AND CONFIDENTIAL
 THE INFORMATION CONTAINED IN THIS DRAWING IS THE SOLE PROPERTY OF APW COMPANY. ANY REPRODUCTION IN PART OR AS A WHOLE WITHOUT THE WRITTEN PERMISSION OF APW COMPANY IS PROHIBITED.

		UNLESS OTHERWISE SPECIFIED:		NAME	DATE
		DIMENSIONS ARE IN INCHES	DRAWN	K.H.	08.10.11
		TOLERANCES:	CHECKED	J.K.	08.10.11
		FRACTIONAL \pm .015	ENG APPR.	J.K.	08.10.11
		ANGULAR: MACH \pm 2 BEND \pm 2	MFG APPR.	J.K.	08.10.11
		TWO PLACE DECIMAL \pm .005	Q.A.		
		THREE PLACE DECIMAL \pm .003	COMMENTS:		
		INTERPRET GEOMETRIC TOLERANCING PER: ANSI			
		MATERIAL			
NEXT ASSY	USED ON	FINISH			
APPLICATION		DO NOT SCALE DRAWING			

APW COMPANY

TITLE:

EM075-24-212-B

SIZE
A

DWG. NO.
6036

REV
A

SCALE: 3:2

WEIGHT:

SHEET 1 OF 1