

Electrical Specifications

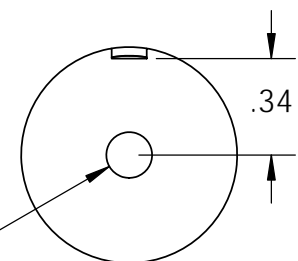
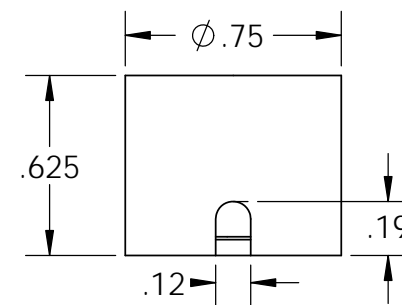
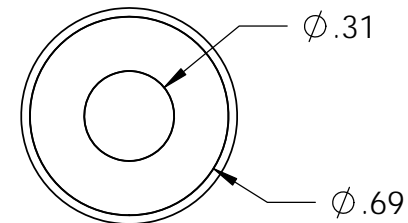
Voltage: 24 VDC
Duty Cycle: Continuous
Resistance: 585 ohms \pm 10% (@ 20c)
Amps @ rated Volts: 0.04
Watts @ rated Volts: 1.0
Holding: 6 lbs (1/4" Thick 1215 CRS @ 20c)
Operating Temp: -40c to 60c (range)

Additional Components

Screw: N/A
Spring: N/A
Spiral Pin: N/A
Potting: United Resin Corp. (El-cast Black)
Finish: Housing - Zinc or Electroless Nickel Plating (0.0002-0.0003")

18" Long Leads
26 Ga. Teflon Type E

Isometric View



PROPRIETARY AND CONFIDENTIAL
THE INFORMATION CONTAINED IN THIS DRAWING IS THE SOLE PROPERTY OF APW COMPANY. ANY REPRODUCTION IN PART OR AS A WHOLE WITHOUT THE WRITTEN PERMISSION OF APW COMPANY IS PROHIBITED.

		UNLESS OTHERWISE SPECIFIED:		NAME	DATE	APW COMPANY		
		DIMENSIONS ARE IN INCHES TOLERANCES: FRACTIONAL $\pm .015$ ANGULAR: MACH ± 2 BEND ± 2 TWO PLACE DECIMAL $\pm .005$ THREE PLACE DECIMAL $\pm .003$	DRAWN	K.H.	07.11.11			
		INTERPRET GEOMETRIC TOLERANCING PER: ANSI	CHECKED	J.K.	07.11.11	SIZE	DWG. NO.	REV
		MATERIAL	ENG APPR.	J.K.	07.11.11			
NEXT ASSY	USED ON	FINISH	MFG APPR.	J.K.	07.11.11	SCALE: 3:2 WEIGHT: SHEET 1 OF 1		
APPLICATION		DO NOT SCALE DRAWING	Q.A.					
			COMMENTS:					