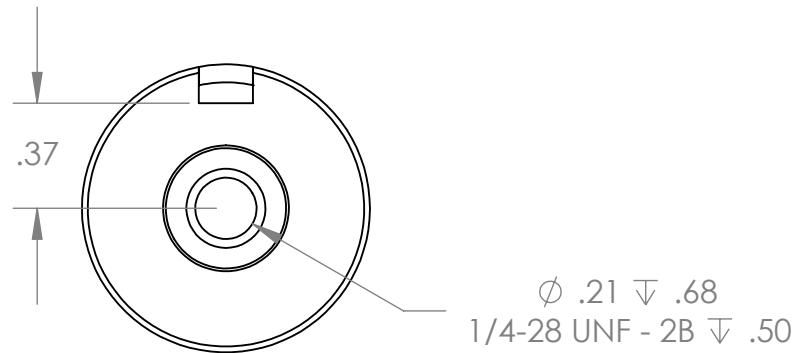
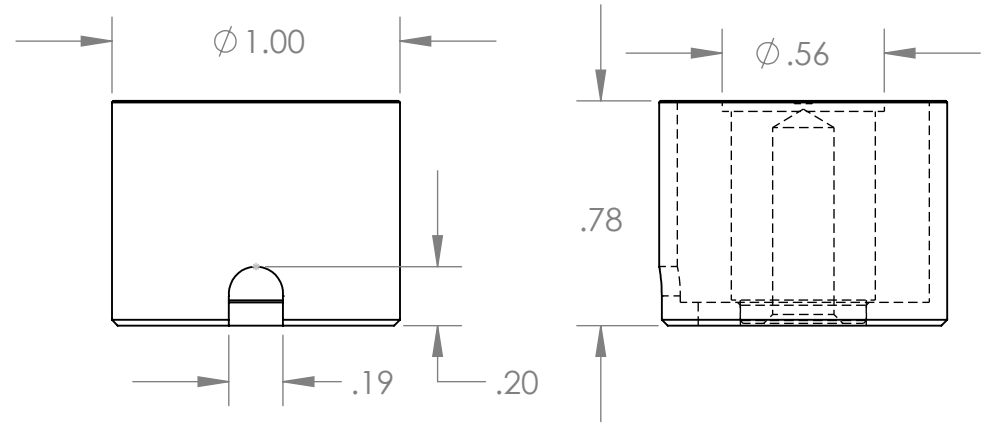


Isometric View



Electrical Specifications

- Voltage:** 12 VDC
- Duty Cycle:** Continuous
- Resistance:** 36.7ohms ± 10% (@ 20c)
- Amps @ rated Volts:** 0.33
- Watts @ rated Volts:** 4.0
- Holding:** 25 lbs (1/4" Thick 1215 CRS @ 20c)
- Operating Temp:** -40c to 60c (range)

Additional Components

- Screw:** N/A
- Spring:** N/A
- Spiral Pin:** N/A
- Potting:** N/A

Finish: Housing - Zinc or Electroless Nickel Plating (0.0002-0.0003")

PROPRIETARY AND CONFIDENTIAL
 THE INFORMATION CONTAINED IN THIS DRAWING IS THE SOLE PROPERTY OF APW COMPANY. ANY REPRODUCTION IN PART OR AS A WHOLE WITHOUT THE WRITTEN PERMISSION OF APW COMPANY IS STRICTLY PROHIBITED.

		UNLESS OTHERWISE SPECIFIED:	NAME	DATE
		DIMENSIONS ARE IN INCHES	DRAWN	D.P. 01.08.2024
		TOLERANCES:	CHECKED	
		FRACTIONAL ± .010	ENG APPR.	
		ANGULAR: MACH ± BEND ±	MFG APPR.	
		TWO PLACE DECIMAL ±.005	Q.A.	
		THREE PLACE DECIMAL ±.003	COMMENTS:	
		Break Sharp edges 0.002" unless otherwise noted		
		MATERIAL		
		FINISH		
NEXT ASSY	USED ON			
APPLICATION		DO NOT SCALE DRAWING		

APW COMPANY		
TITLE:		
P/N: EM100-12-222-A		
SIZE	DWG. NO.	REV
A	6004	
SCALE: 3:2	WEIGHT:	SHEET 1 OF 1