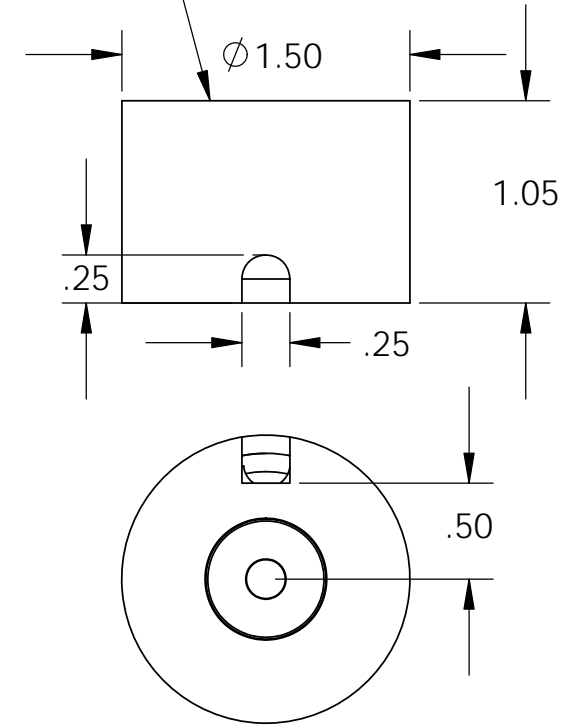
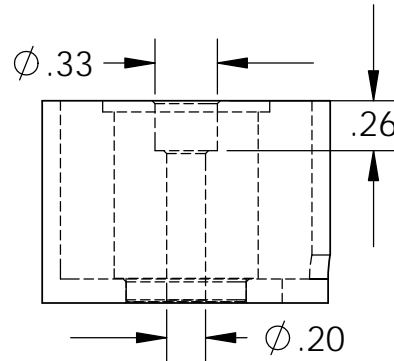


Isometric View

Center Post Recessed  
(.003-.005)  
Quick Release



**Specifications**

**Voltage:** 115 VAC  
**Duty Cycle:** Continuous  
**Resistance:** 1533 ohms  $\pm 10\%$  (@ 20c)  
**Amps @ rated Volts:** 0.05  
**Watts @ rated Volts:** 6.0  
**Holding:** 66 lbs (1/4" Thick 1215 CRS @ 20c)  
**Operating Temp:** -40c to 60c (range)

**Additional Components**

**Screw:** 10-32 x 1 1/4" Long (Hex Socket Head Cap) w/Nylok  
**Spring:** N/A  
**Spiral Pin:** N/A  
**Potting:** N/A

**Finish:** Housing - Zinc or Electroless Nickel Plating (0.0002-0.0003")

**PROPRIETARY AND CONFIDENTIAL**  
 THE INFORMATION CONTAINED IN THIS DRAWING IS THE SOLE PROPERTY OF APW COMPANY. ANY REPRODUCTION IN PART OR AS A WHOLE WITHOUT THE WRITTEN PERMISSION OF APW COMPANY IS PROHIBITED.

		UNLESS OTHERWISE SPECIFIED:		NAME	DATE
		DIMENSIONS ARE IN INCHES	DRAWN	K.H.	07.13.11
		TOLERANCES:	CHECKED	J.K.	07.13.11
		FRACTIONAL $\pm .015$	ENG APPR.	J.K.	07.13.11
		ANGULAR: MACH $\pm 2$ BEND $\pm 2$	MFG APPR.	J.K.	07.13.11
		TWO PLACE DECIMAL $\pm .005$	Q.A.		
		THREE PLACE DECIMAL $\pm .003$	COMMENTS:		
		INTERPRET GEOMETRIC TOLERANCING PER: ANSI			
		MATERIAL			
NEXT ASSY	USED ON	FINISH			
APPLICATION		DO NOT SCALE DRAWING			

<b>APW COMPANY</b>		
TITLE: P/N: EM150-115ac-122		
SIZE <b>A</b>	DWG. NO. <b>5862</b>	REV
SCALE: 1:1	WEIGHT:	SHEET 1 OF 1