

## Electrical Specifications

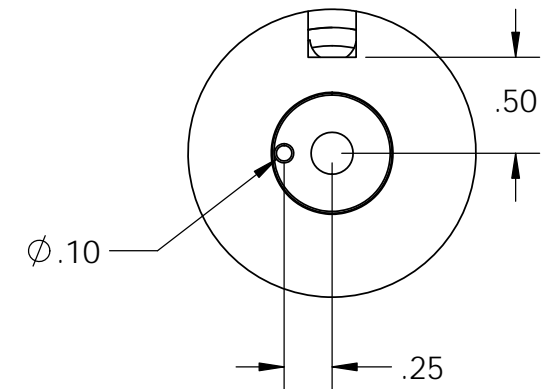
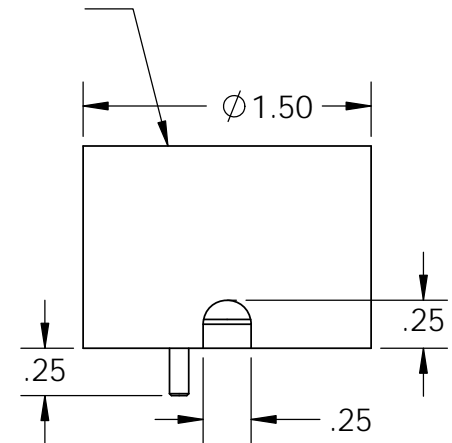
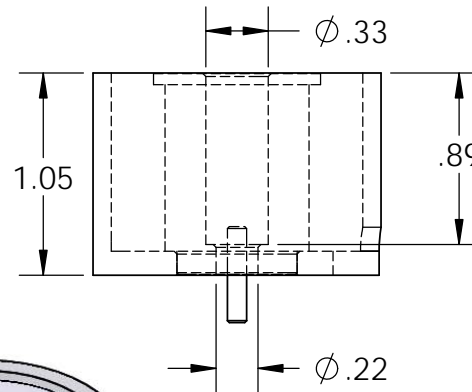
**Voltage:** 24 VDC  
**Duty Cycle:** Continuous  
**Resistance:** 96 ohms  $\pm$  10% (@ 20c)  
**Amps @ rated Volts:** 0.25  
**Watts @ rated Volts:** 6.0  
**Holding:** 88 lbs (1/4" Thick 1215 CRS @ 20c)  
**Operating Temp:** -40c to 60c (range)

## Additional Components

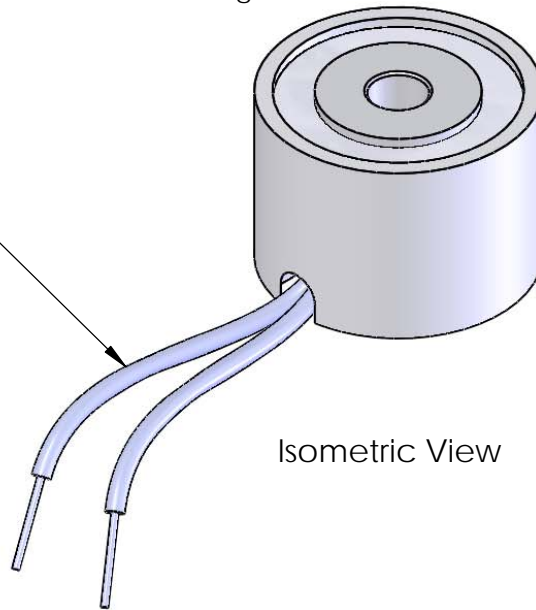
**Screw:** 91-765-1 (#8-32 x .83" standoff)  
**Spring:** LC-022D-01-M  
**Spiral Pin:** N/A  
**Potting:** N/A

**Finish:** Housing - Zinc or Electroless Nickel Plating  
 (0.0002-0.0003")

Center Post Recessed  
 (.003-.005)  
 Quick Release



18" Long Leads  
 22 Ga. Type 1015 UL



Isometric View

**PROPRIETARY AND CONFIDENTIAL**  
 THE INFORMATION CONTAINED IN THIS DRAWING IS THE SOLE PROPERTY OF APW COMPANY. ANY REPRODUCTION IN PART OR AS A WHOLE WITHOUT THE WRITTEN PERMISSION OF APW COMPANY IS PROHIBITED.

		UNLESS OTHERWISE SPECIFIED:	NAME	DATE
		DIMENSIONS ARE IN INCHES	DRAWN	K.H. 07.13.11
		TOLERANCES:	CHECKED	J.K. 07.13.11
		FRACTIONAL $\pm$ .015	ENG APPR.	J.K. 07.13.11
		ANGULAR: MACH $\pm$ 2 BEND $\pm$ 2	MFG APPR.	J.K. 07.13.11
		TWO PLACE DECIMAL $\pm$ .005	Q.A.	
		THREE PLACE DECIMAL $\pm$ .003	COMMENTS:	
		INTERPRET GEOMETRIC TOLERANCING PER: ANSI		
		MATERIAL		
NEXT ASSY	USED ON	FINISH		
APPLICATION		DO NOT SCALE DRAWING		

**APW COMPANY**

TITLE:

EM150-24-121

SIZE  
**A**

DWG. NO.  
**5726**

REV

SCALE: 1:1

WEIGHT:

SHEET 1 OF 1