

Electrical Specifications

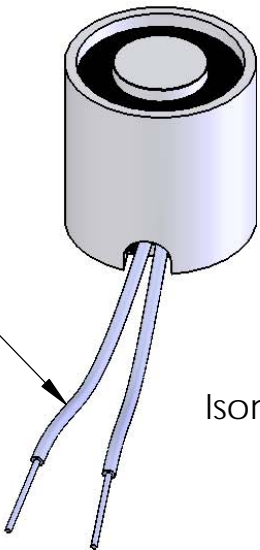
Voltage: 24 VDC
Duty Cycle: Continuous
Resistance: 510 ohms ± 10% (@ 20c)
Amps @ rated Volts: 0.04
Watts @ rated Volts: 1.0
Holding: 2 lbs (1/4" Thick 1215 CRS @ 20c)
Operating Temp: -40c to 60c (range)

Additional Components

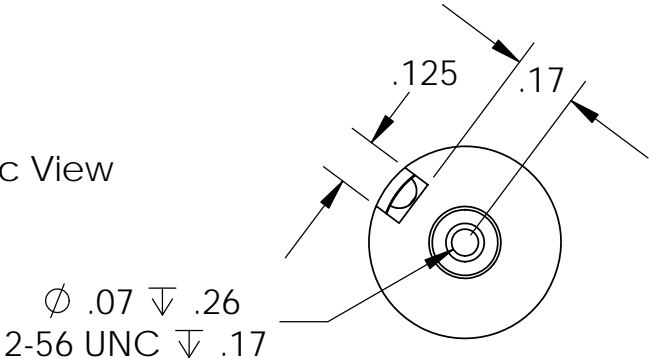
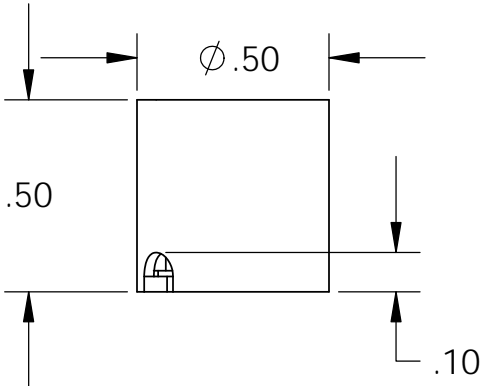
Screw: N/A
Spring: N/A
Spiral Pin: N/A
Potting: N/A

Finish: Housing - Zinc or Electroless Nickel Plating
(0.0002-0.0003")

12" Long (2x)
.5 Strip ends
28 Ga. (7/36)
Teflon Coated
Lead Wires
(Yellow)



Isometric View



PROPRIETARY AND CONFIDENTIAL
THE INFORMATION CONTAINED IN THIS
DRAWING IS THE SOLE PROPERTY OF
APW COMPANY. ANY REPRODUCTION
IN PART OR AS A WHOLE WITHOUT THE
WRITTEN PERMISSION OF
APW COMPANY IS PROHIBITED.

		UNLESS OTHERWISE SPECIFIED:		NAME	DATE	APW COMPANY	
		DIMENSIONS ARE IN INCHES		DRAWN	K.H.	07.19.11	TITLE: P/N: EM050-24-222
		TOLERANCES:		CHECKED	J.K.	07.19.11	
		FRACTIONAL ± .015		ENG APPR.	J.K.	07.19.11	
		ANGULAR: MACH ± 2 BEND ± 2		MFG APPR.	J.K.	07.19.11	
		TWO PLACE DECIMAL ± .005		Q.A.			SIZE A
		THREE PLACE DECIMAL ± .003		COMMENTS:			
		INTERPRET GEOMETRIC TOLERANCING PER: ANSI					DWG. NO. 5442
		MATERIAL					REV
		FINISH					
NEXT ASSY		USED ON					
APPLICATION		DO NOT SCALE DRAWING					
							SCALE: 2:1
							WEIGHT:
							SHEET 1 OF 1