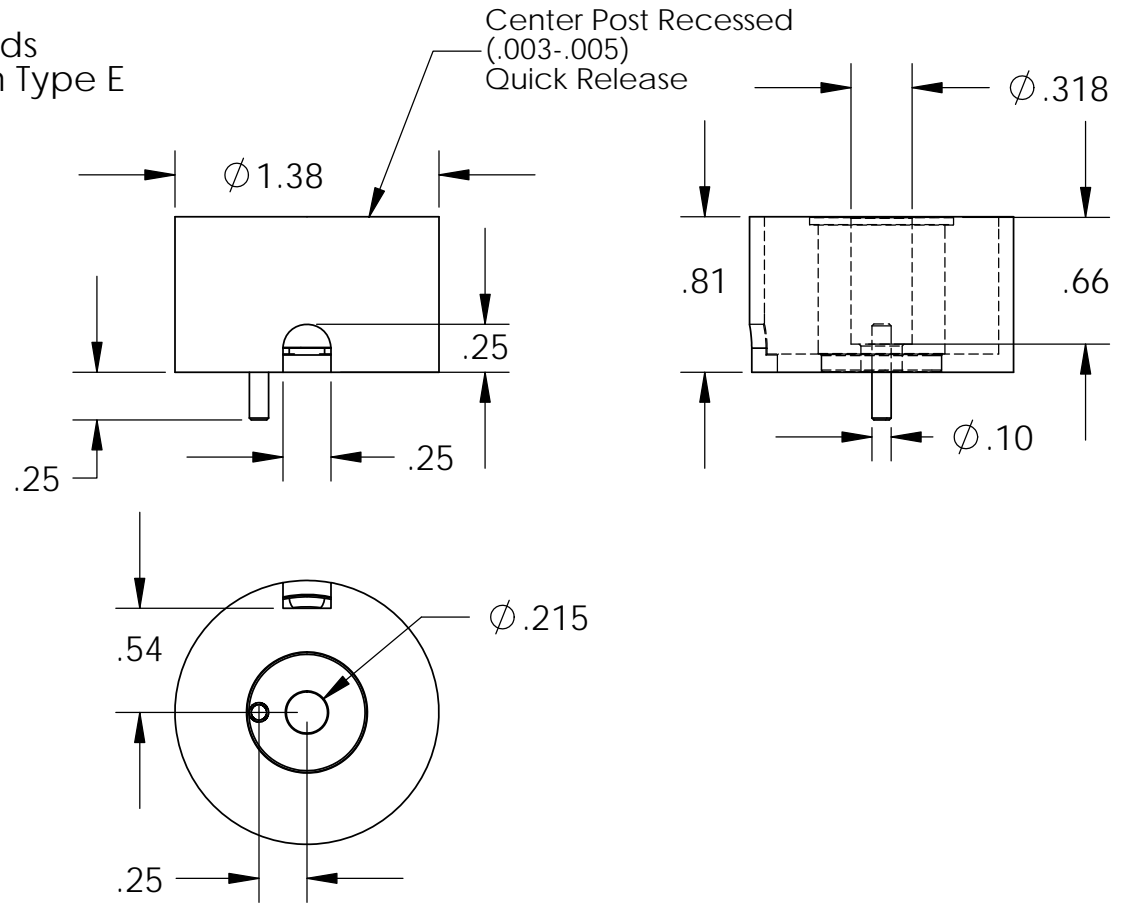


18" Long Leads
22 Ga. Teflon Type E



Electrical Specifications

Voltage: 24 VDC
Duty Cycle: Continuous
Resistance: 384 ohms $\pm 10\%$ (@ 20c)
Amps @ rated Volts: 0.06
Watts @ rated Volts: 1.5
Holding: 19 lbs (1/4" Thick 1215 CRS @ 20c)
Operating Temp: -40c to 60c (range)

Additional Components

Screw: 91-765-1-5 (undercut #8-32 x .83" standoff)
Spring: 328-SC-104
Spiral Pin: N/A
Potting: N/A

Finish: Housing - Zinc or Electroless Nickel Plating
(0.0002-0.0003")

PROPRIETARY AND CONFIDENTIAL
 THE INFORMATION CONTAINED IN THIS DRAWING IS THE SOLE PROPERTY OF APW COMPANY. ANY REPRODUCTION IN PART OR AS A WHOLE WITHOUT THE WRITTEN PERMISSION OF APW COMPANY IS PROHIBITED.

		UNLESS OTHERWISE SPECIFIED:		NAME	DATE
		DIMENSIONS ARE IN INCHES	DRAWN	K.H.	07.20.11
		TOLERANCES:	CHECKED	J.K.	07.20.11
		FRACTIONAL $\pm .015$	ENG APPR.	J.K.	07.20.11
		ANGULAR: MACH ± 2 BEND ± 2	MFG APPR.	J.K.	07.20.11
		TWO PLACE DECIMAL $\pm .005$	Q.A.		
		THREE PLACE DECIMAL $\pm .003$	COMMENTS:		
		INTERPRET GEOMETRIC TOLERANCING PER: ANSI			
		MATERIAL			
NEXT ASSY	USED ON	FINISH			
APPLICATION		DO NOT SCALE DRAWING			

APW COMPANY INC.

TITLE:
P/N: EM137-24-121-S1

SIZE A	DWG. NO. 5435	REV
SCALE: 1:1	WEIGHT:	SHEET 1 OF 1