

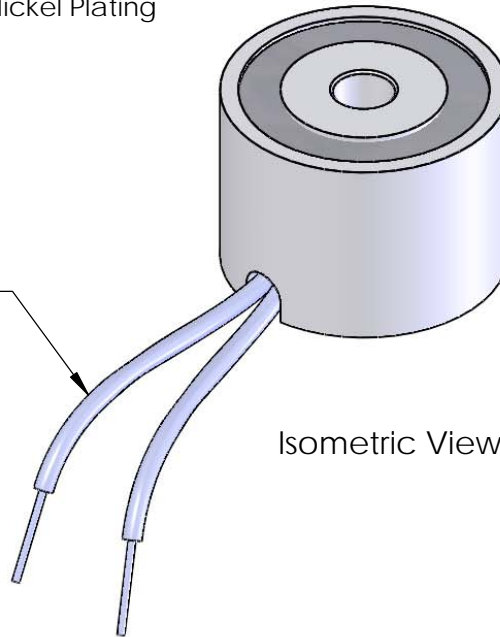
## Electrical Specifications

**Voltage:** 6 VDC  
**Duty Cycle:** Continuous  
**Resistance:** 6 ohms  $\pm$  10% (@ 20c)  
**Amps @ rated Volts:** 1.0  
**Watts @ rated Volts:** 6.0  
**Holding:** 66 lbs (1/4" Thick 1215 CRS @ 20c)  
**Operating Temp:** -40c to 60c (range)

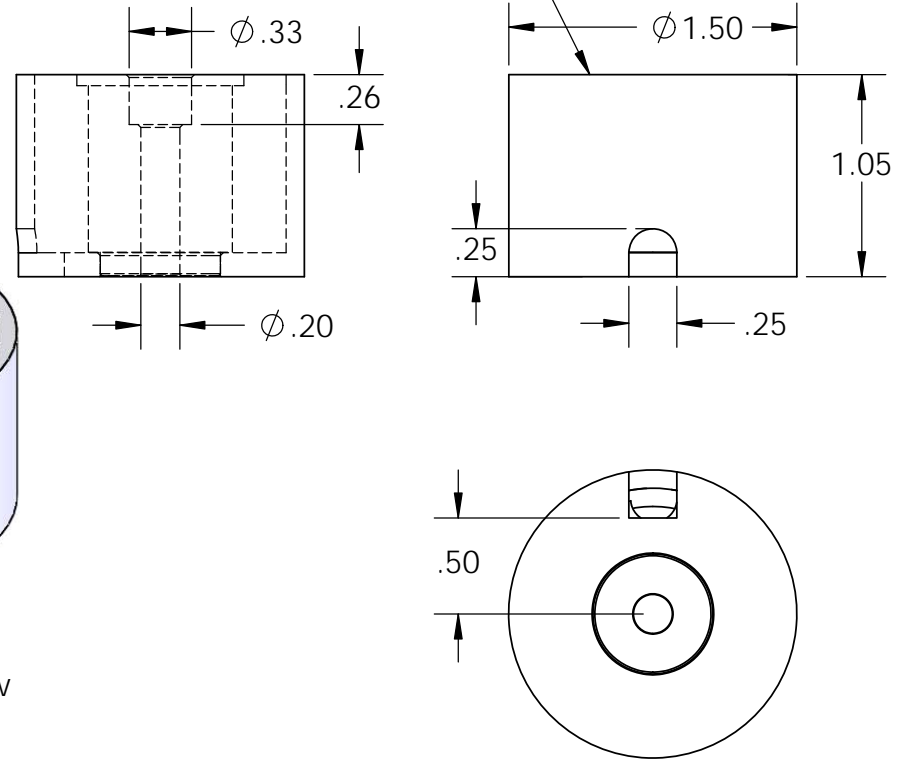
## Additional Components

**Screw:** 10-32 x 1 1/4" Long (Hex Socket Head Cap) w/Nylok  
**Spring:** N/A  
**Spiral Pin:** N/A  
**Potting:** United Resin Corp. (El-cast Black)  
**Finish:** Housing - Zinc or Electroless Nickel Plating (0.0002-0.0003")

18" Long Leads  
22 Ga. Type 1015 UL



Center Post Recessed  
(.003-.005)  
Quick Release



<b>PROPRIETARY AND CONFIDENTIAL</b> THE INFORMATION CONTAINED IN THIS DRAWING IS THE SOLE PROPERTY OF APW COMPANY. ANY REPRODUCTION IN PART OR AS A WHOLE WITHOUT THE WRITTEN PERMISSION OF APW COMPANY IS PROHIBITED.			UNLESS OTHERWISE SPECIFIED:		NAME	DATE	<b>APW COMPANY</b>  TITLE: P/N: EM150-6-112
			DIMENSIONS ARE IN INCHES	DRAWN	K.H.	07.13.11	
			TOLERANCES:	CHECKED	J.K.	07.13.11	
			FRACTIONAL $\pm .015$	ENG APPR.	J.K.	07.13.11	
			ANGULAR: MACH $\pm 2$ BEND $\pm 2$	MFG APPR.	J.K.	07.13.11	
		TWO PLACE DECIMAL $\pm .005$	Q.A.				
		THREE PLACE DECIMAL $\pm .003$	COMMENTS:				
		INTERPRET GEOMETRIC TOLERANCING PER: ANSI					
		MATERIAL					
		FINISH					
	NEXT ASSY	USED ON					
	APPLICATION		DO NOT SCALE DRAWING				
					SIZE	DWG. NO.	REV
					<b>A</b>	<b>5424</b>	
					SCALE: 1:1	WEIGHT:	SHEET 1 OF 1