

Electrical Specifications

Voltage: 12 VDC
Duty Cycle: Continuous
Resistance: 142 ohms \pm 10% (@ 20c)
Amps @ rated Volts: 0.08
Watts @ rated Volts: 1.0
Holding: 6 lbs (1/4" Thick 1215 CRS @ 20c)
Operating Temp: -40c to 60c (range)

Additional Components

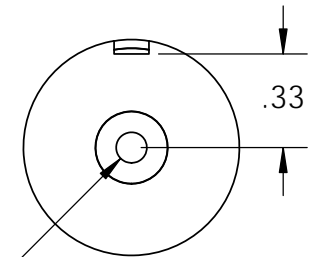
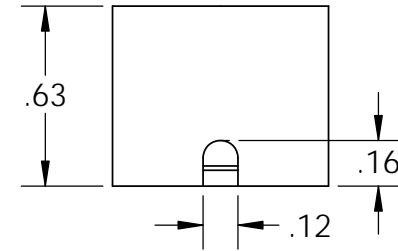
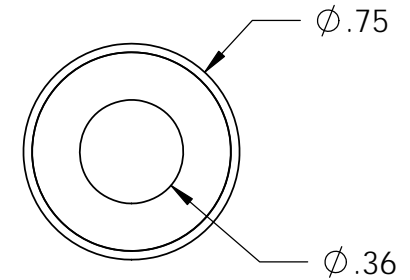
Screw: N/A
Spring: N/A
Spiral Pin: N/A
Potting: United Resin Corp. (El-cast Black)

Finish: Housing - Zinc or Electroless Nickel Plating
 (0.0002-0.0003")

18" Long Leads
 26 Ga. Teflon Type E



Isometric View



ϕ .11 ∇ .51
 6-32 UNC ∇ .35

PROPRIETARY AND CONFIDENTIAL
 THE INFORMATION CONTAINED IN THIS DRAWING IS THE SOLE PROPERTY OF APW COMPANY. ANY REPRODUCTION IN PART OR AS A WHOLE WITHOUT THE WRITTEN PERMISSION OF APW COMPANY IS PROHIBITED.

		UNLESS OTHERWISE SPECIFIED:		NAME	DATE	APW COMPANY		
		DIMENSIONS ARE IN INCHES TOLERANCES: FRACTIONAL \pm .015 ANGULAR: MACH \pm 2 BEND \pm 2 TWO PLACE DECIMAL \pm .005 THREE PLACE DECIMAL \pm .003	DRAWN	K.H.	08.10.11	TITLE: EM075-12-212		
	CHECKED		J.K.	08.10.11				
	ENG APPR.		J.K.	08.10.11				
	MFG APPR.		J.K.	08.10.11				
		INTERPRET GEOMETRIC TOLERANCING PER: ANSI	Q.A.			SIZE DWG. NO. REV A 4954		
		MATERIAL	COMMENTS:					
NEXT ASSY	USED ON	FINISH						
APPLICATION		DO NOT SCALE DRAWING				SCALE: 3:2	WEIGHT:	SHEET 1 OF 1