

## Electrical Specifications

**Voltage:** 24 VDC  
**Duty Cycle:** Continuous  
**Resistance:** 585 ohms  $\pm$  10% (@ 20c)  
**Amps @ rated Volts:** 0.04  
**Watts @ rated Volts:** 1.0  
**Holding:** 6 lbs (1/4" Thick 1215 CRS @ 20c)  
**Operating Temp:** -40c to 60c (range)

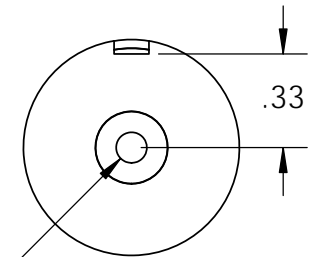
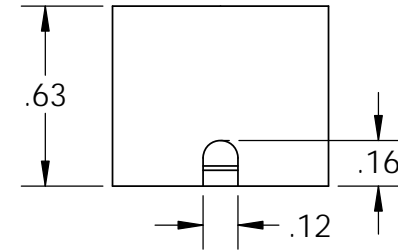
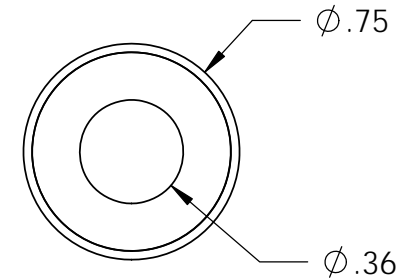
## Additional Components

**Screw:** N/A  
**Spring:** N/A  
**Spiral Pin:** N/A  
**Potting:** United Resin Corp. (El-cast Black)

**Finish:** Housing - Zinc or Electroless Nickel Plating  
 (0.0002-0.0003")

18" Long Leads  
 26 Ga. Teflon Type E

Isometric View



$\phi$  .11  $\nabla$  .51  
 6-32 UNC  $\nabla$  .35

**PROPRIETARY AND CONFIDENTIAL**  
 THE INFORMATION CONTAINED IN THIS DRAWING IS THE SOLE PROPERTY OF APW COMPANY. ANY REPRODUCTION IN PART OR AS A WHOLE WITHOUT THE WRITTEN PERMISSION OF APW COMPANY IS PROHIBITED.

		UNLESS OTHERWISE SPECIFIED:		NAME	DATE	<b>APW COMPANY</b>	
		DIMENSIONS ARE IN INCHES TOLERANCES: FRACTIONAL $\pm$ .015 ANGULAR: MACH $\pm$ 2 BEND $\pm$ 2 TWO PLACE DECIMAL $\pm$ .005 THREE PLACE DECIMAL $\pm$ .003	DRAWN	K.H.	08.10.11		
			CHECKED	J.K.	08.10.11		
			ENG APPR.	J.K.	08.10.11		
			MFG APPR.	J.K.	08.10.11		
		INTERPRET GEOMETRIC TOLERANCING PER: ANSI		Q.A.		SIZE <b>A</b> DWG. NO. <b>4953</b> REV SCALE: 3:2 WEIGHT: SHEET 1 OF 1	
		MATERIAL	COMMENTS:				
NEXT ASSY	USED ON	FINISH					
APPLICATION		DO NOT SCALE DRAWING					