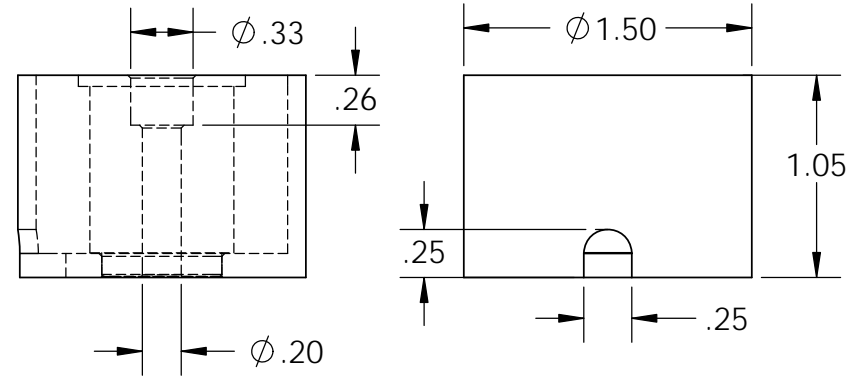


Electrical Specifications

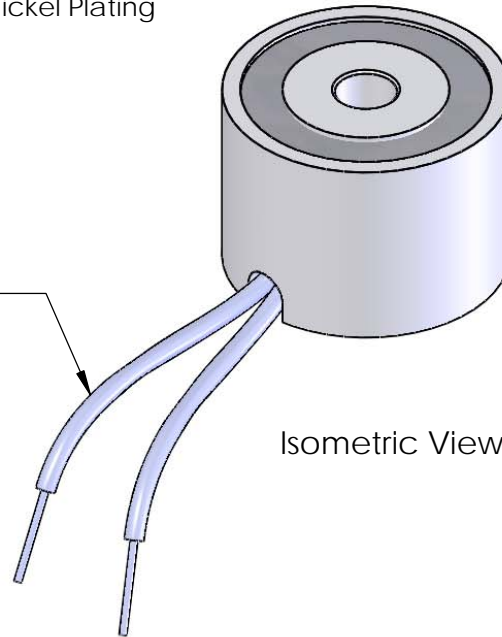
Voltage: 24 VAC
Duty Cycle: Continuous
Resistance: 96 ohms \pm 10% (@ 20c)
Amps @ rated Volts: 0.25
Watts @ rated Volts: 6.0
Holding: 88 lbs (1/4" Thick 1215 CRS @ 20c)
Operating Temp: -40c to 60c (range)

Additional Components

Screw: 10-32 x 1 1/4" Long (Hex Socket Head Cap) w/Nylok
Spring: N/A
Spiral Pin: N/A
Potting: United Resin Corp. (Ei-cast Black)
Finish: Housing - Zinc or Electroless Nickel Plating (0.0002-0.0003")



8" from coil to rectifier 11" after 22 Ga. Type 1015 UL



PROPRIETARY AND CONFIDENTIAL
 THE INFORMATION CONTAINED IN THIS DRAWING IS THE SOLE PROPERTY OF APW COMPANY. ANY REPRODUCTION IN PART OR AS A WHOLE WITHOUT THE WRITTEN PERMISSION OF APW COMPANY IS PROHIBITED.

		UNLESS OTHERWISE SPECIFIED:		NAME	DATE	APW COMPANY		
		DIMENSIONS ARE IN INCHES TOLERANCES: FRACTIONAL $\pm .015$ ANGULAR: MACH ± 2 BEND ± 2 TWO PLACE DECIMAL $\pm .005$ THREE PLACE DECIMAL $\pm .003$	DRAWN	K.H.	07.13.11			TITLE: P/N: EM150-24ac-212
		INTERPRET GEOMETRIC TOLERANCING PER: ANSI	CHECKED	J.K.	07.13.11	SIZE A	DWG. NO. 4727	
		MATERIAL	ENG APPR.	J.K.	07.13.11			SCALE: 1:1
NEXT ASSY	USED ON	FINISH	MFG APPR.	J.K.	07.13.11			
APPLICATION		DO NOT SCALE DRAWING	Q.A.					
			COMMENTS:					