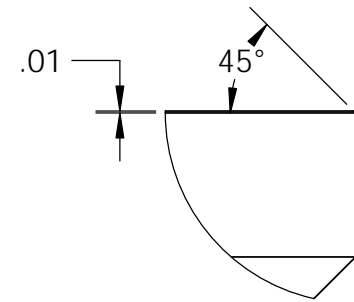
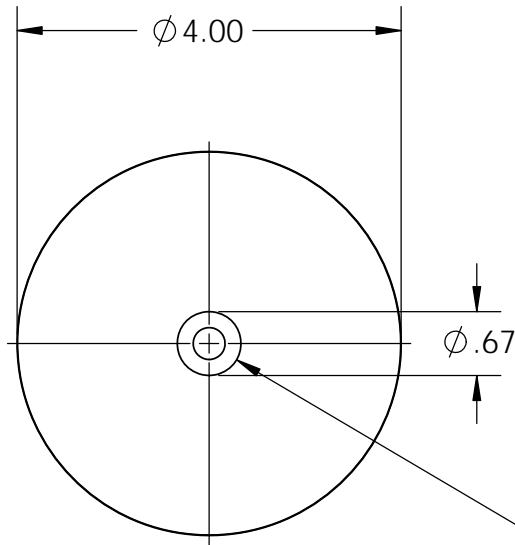
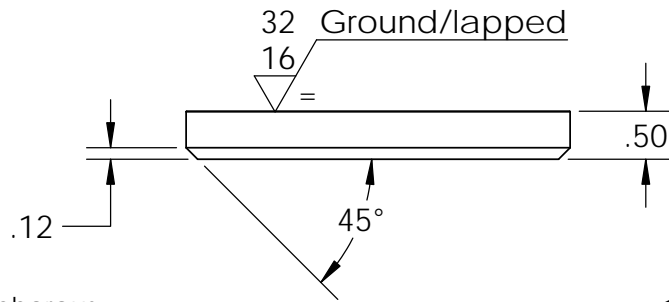


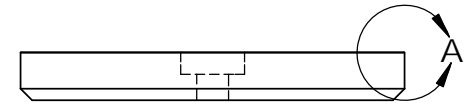
Isometric View



DETAIL A
SCALE 2 : 1



ϕ .332 THRU ALL
ϕ .67 ▽ .230



Plating Details:

Process: Electroless Nickel MID Phosphorous

Thickness: 0.0002" to 0.0003"

Handling: Must be individually Racked
(No barrel plating)

128 All other surfaces unless indicated otherwise

64

PROPRIETARY AND CONFIDENTIAL
THE INFORMATION CONTAINED IN THIS DRAWING IS THE SOLE PROPERTY OF APW COMPANY. ANY REPRODUCTION IN PART OR AS A WHOLE WITHOUT THE WRITTEN PERMISSION OF APW COMPANY IS PROHIBITED.

| | | | | | |
|-------------|---------|---|----------------------|------|----------|
| | | UNLESS OTHERWISE SPECIFIED: | | NAME | DATE |
| | | DIMENSIONS ARE IN INCHES | DRAWN | J.K. | 08.07.13 |
| | | TOLERANCES: | CHECKED | J.K. | 08.07.13 |
| | | FRACTIONAL ± .015 | ENG APPR. | J.K. | 08.07.13 |
| | | ANGULAR: MACH ± 2 BEND ± 2 | MFG APPR. | J.K. | 08.07.13 |
| | | TWO PLACE DECIMAL ± .010 | | | |
| | | THREE PLACE DECIMAL ± .005 | | | |
| | | INTERPRET GEOMETRIC TOLERANCING PER: ANSI | Q.A. | | |
| | | MATERIAL | COMMENTS: | | |
| | | 1215 CRS | May Use 1010 or 1018 | | |
| NEXT ASSY | USED ON | FINISH | | | |
| APPLICATION | | DO NOT SCALE DRAWING | | | |

| | | |
|--------------------|---------------|--------------|
| APW COMPANY | | |
| TITLE: | | |
| EM400 Strike Plate | | |
| SIZE | DWG. NO. | REV |
| A | SP-400 | |
| SCALE: 1:2 | WEIGHT: | SHEET 1 OF 1 |