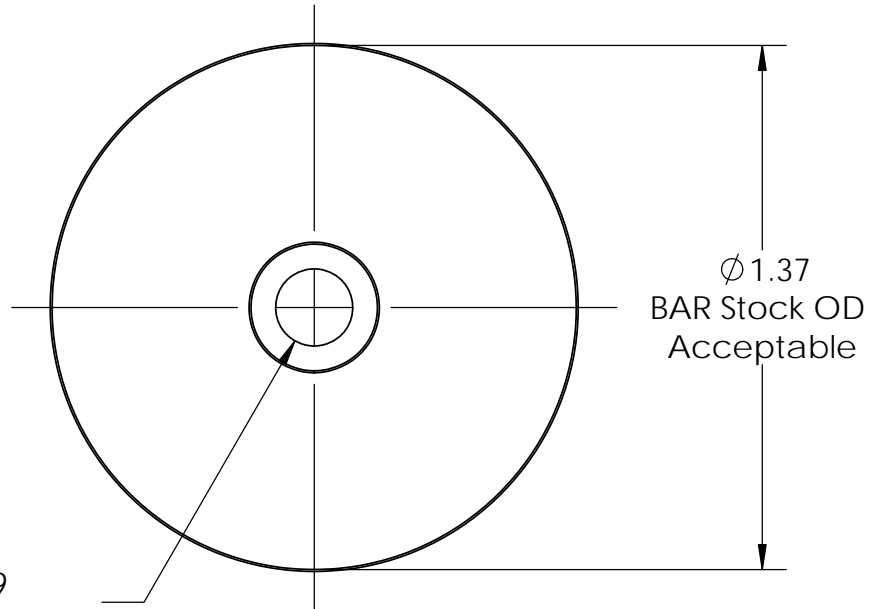
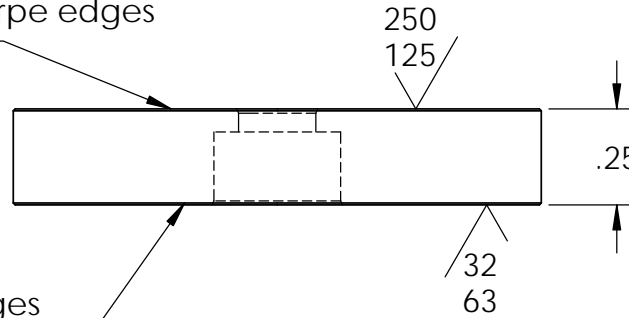


Isometric View

Note: (this side)  
Break all sharpe edges  
.015" max

Note: (this side)  
Break all sharpe edges  
.003-.005" max



Ø 1.37  
BAR Stock OD  
Acceptable

**Plating Details:**

**Process:** Electroless Nickel MID Phosphorous

**Thickness:** 0.0002" to 0.0003"

**Handling:** Must be individually Racked  
(No barrel plating)

- ✓ Ø .20 THRU ALL
- ✓ □ Ø .33 ▽ .19
- ✓ Ø .34 X 51°, NEAR SIDE
- ✓ Ø .21 X 45°, FAR SIDE

**PROPRIETARY AND CONFIDENTIAL**  
THE INFORMATION CONTAINED IN THIS DRAWING IS THE SOLE PROPERTY OF APW COMPANY. ANY REPRODUCTION IN PART OR AS A WHOLE WITHOUT THE WRITTEN PERMISSION OF APW COMPANY IS PROHIBITED.

		UNLESS OTHERWISE SPECIFIED:		NAME	DATE	<b>APW COMPANY</b>	
		DIMENSIONS ARE IN INCHES TOLERANCES: FRACTIONAL ± .015 ANGULAR: MACH ± 2 BEND ± 2 TWO PLACE DECIMAL ± .010 THREE PLACE DECIMAL ± .005		DRAWN	J.K.		
		INTERPRET GEOMETRIC TOLERANCING PER: ANSI		CHECKED			TITLE: <b>Strike Plate EM137</b>
		MATERIAL 1215 CRS		ENG APPR.			
NEXT ASSY	USED ON	FINISH		MFG APPR.			SIZE <b>A</b>
APPLICATION		DO NOT SCALE DRAWING		Q.A.			DWG. NO. <b>SP-137</b>
				COMMENTS:			REV
							SCALE: 2:1
							WEIGHT:
							SHEET 1 OF 1